

Tender Reference No. AFCD/SQ/18/09

**Mai Po Inner Deep Bay Ramsar Site  
Waterbird Monitoring Programme  
2009 - 10**

**Monthly Waterbird Monitoring  
Winter 2009 - 10 Report**



Submitted by  
The Hong Kong Bird Watching Society Ltd.  
Approved Charitable Institution of a Public Character  
to Agriculture, Fisheries and Conservation Department,  
Hong Kong SAR Government

August 2010



*This report is printed on recycled paper*

**Tender Reference No. AFCD/SQ/18/09**

**Waterbird Monitoring at the Mai Po Inner Deep Bay Ramsar Site**

---

**Waterbird Count Coordinator**

YU Yat Tung

The Hong Kong Bird Watching Society Ltd.

**Data Contributors**

John Allcock, Geoff Carey, Mike Chalmers, Gary Chow, Forrest Fong, Vivian Fu, Martin Hale, John and Jemi Holmes, Tony Hung, W.M. Hung, Alan Lam, H.F. Lee, Roger Lee, Mike Leven, Richard Lewthwaite, K.W. Ma, Karl Ng, C.C. Pang, Carmen Or, Y.H. Sung, Captain Wong, H.K. Ying, Y.T. Yu, Shenzhen Bird Watching Society, Agriculture, Fisheries and Conservation Department and The Hong Kong Bird Watching Society Ltd.

**Copyright**

The project is part of the "Mai Po Inner Deep Bay Ramsar Site Waterbird Monitoring Programme 2009-10" funded by Agriculture, Fisheries and Conservation Department, Hong Kong SAR Government (AFCD). All the data shall be the property of the Government with full copyright

**Report available for public information**

The Hong Kong Bird Watching Society Limited  
14/F, Ruby Commercial Building, 480 Nathan Road,  
Yau Ma Tei, Kowloon, Hong Kong  
E-mail: [hkbws@hkbws.org.hk](mailto:hkbws@hkbws.org.hk) Website: [www.hkbws.org.hk](http://www.hkbws.org.hk)

And

Agriculture, Fisheries and Conservation Department  
Hong Kong SAR Government  
7/F, Cheung Sha Wan Government Offices  
303 Cheung Sha Wan Road  
Kowloon, Hong Kong  
Website: [www.afcd.gov.hk](http://www.afcd.gov.hk)

**This publication should be cited as**

Anon. 2010. Winter 2009-10 Report on Waterbird Monitoring at the Mai Po Inner Deep Bay Ramsar Site. Report by Hong Kong Bird Watching Society to the Agriculture, Fisheries and Conservation Department, Hong Kong Special Administrative Region Government.

## TABLE OF CONTENTS

### REPORT

1. Introduction.....	6
2. Methodology .....	6
3. Results .....	7
3.1 Species of conservation significance.....	11
3.2 Other notable counts .....	15
4. Conclusion.....	16
5. Acknowledgements.....	17
6. References.....	17

### TABLE

Table 1. Comparisons of total waterbird numbers in the Deep Bay and Ramsar Site, winter 2006-07 to 2009-10.....	8
Table 2. Numbers of waterbird counts, winter 2009-10 by groups and areas .....	6
Table 3. Peak numbers of different waterbird groups in the Deep Bay area during the mid-winter period from 2001-2010 .....	10
Table 4. Numbers of waterbird groups recorded in low-tide counts, winter 2009-10.....	11

### FIGURE

Figure 1. Winter aggregate of species peak counts and mid-winter (January) waterbird counts, 1992-2010.....	20
---	----

### Map

Map 1. Map of Hong Kong showing location of the Mai Po Inner Mai Po Deep Bay Ramsar Site .....	22
Map 2. Location of major count sites of the Waterbird Monitoring Programme ...	22
Map 3. Boundary of Mai Po Inner Deep Bay Ramsar site area .....	23

### APPENDICE

Appendix 1. Counts of waterbird in October 2009	
Counts of waterbird in November 2009	
Counts of waterbird in December 2009	
Counts of waterbird in January 2010	
Counts of waterbird in February 2010	
Counts of waterbird in March 2010	

Appendix 2. Peak count of each waterbird species, winter 2009-10

Appendix 3. Low-tide count, December 2009

Low-tide count, January 2010

Low-tide count, February 2010

---

# Winter 2009-10 Report on Waterbird Monitoring at the Mai Po Inner Deep Bay Ramsar Site

## *Report*



The Hong Kong Bird Watching Society Limited



Agriculture, Fisheries and Conservation Department

# MAI PO INNER DEEP BAY RAMSAR SITE WATERBIRD MONITORING PROGRAMME

---

Programme 2009/10

Monthly Waterbird Count

Oct 2009 - Mar 2010

---

## Winter 2009-2010 Report

Y.T. Yu<sup>1</sup>

### 1. Introduction

Long-term monitoring of waterbirds provides an indication of the health of the Deep Bay ecosystem. It is an important strategic aspect for the management of the Mai Po Inner Deep Bay Ramsar Site. This Waterbird Monitoring Programme was administered and executed by the Hong Kong Bird Watching Society Limited (HKBWS) under subvention from the Agriculture, Fisheries and Conservation Department (AFCD) from Dec 1997 to March 2004. Starting from April 2004, the Waterbird Monitoring Programme was arranged under a service contract funded by AFCD.

Monthly counts of waterbirds in the site form a major part of this programme, the others being counts of shorebirds during the migration season, and egret surveys during the breeding season. This report concerns the monthly waterbird monitoring component for the winter period from October 2009 to March 2010 under the contract tender reference no. AFCD/SQ/18/09.

### 2. Methodology

Coordinated mid-monthly counts of wintering waterbirds in Hong Kong were carried out by members of the HKBWS on 18 October 2009, 15 November 2009, 20 December 2009, 24 January 2010, 21 February 2010 and 7 March 2010. The January count coincided with the Asian Waterfowl Census organized by Wetlands International - Asia Pacific. Counts from November to March have been carried out each winter since 1992-1993; counts in January were first carried out in 1979.

The survey area extends from fishponds at Ma Tso Lung (Hoo Hok Wai) in the east to the coastal fringe at Pak Nai and Nim Wan in the west and the Futian

---

<sup>1</sup> Yu Yat Tung (Coordinator, Waterbird Monitoring Programme)  
The Hong Kong Bird Watching Society Limited  
Postal address: 14/F., Ruby Comm. Bldg., 480 Nathan Road, Kowloon, Hong Kong  
Tel: (852) 2377 4387 Fax: (852) 2314 3687 E-mail: hkbws@hkbws.org.hk

National Nature Reserve in Shenzhen Special Economic Zone, China in the north. Since November 2004, counting of waterbirds in the Hong Kong Wetland Park at Tin Shui Wai was included as a part of this monitoring programme (Map 1 and 2). Figure of each count is mainly presented with two areas: Deep Bay area and Ramsar site. The whole Deep Bay area includes all the counting areas in this study that is mentioned above and details could refer to Map 1 and 2. Figure of Ramsar site only includes the numbers of birds recorded within the boundary of the Mai Po Inner Deep Bay Ramsar site that is shown in Map 3 with an exception of the Mai Po village egretty because this area is not covered by this part of the monitoring programme. Simply speaking, the Deep Bay area figure covers all the numbers of birds in the whole study area, while the Ramsar site covers the numbers of the birds in some parts of the Deep Bay area.

In general, this monitoring programme involves surveying specified areas and counting waterbirds in individual fishponds, *gei wai*, streams, mudflat or marshes. Tidal areas of Inner Deep Bay were surveyed simultaneously so as to ensure the chance of double-counting was as small as possible.

During the winter months, there are substantial numbers of birds in the bay. However, there are very few diurnal tides of a sufficient height to force all waterbirds off the mudflat and onto roost sites inland. Counts were made on dates with a rising tide, preferably one that comes to about 2.0 m. High-tide counts of individual species made one week either side of the count date are included if they are considered to be more accurate than that made on the count day. This methodology used is described in detail in the Waterbird Count Handbook (Carey 2002, Map 1, Map 2).

Daytime high tides were not high enough to move the waterbirds close to the Mai Po Boardwalk birdwatching hide in recent winters. An additional low-tide count was thus arranged in the mid-winter period (i.e. December to February), in order to providing extra information on the number of ducks and gulls in particular present in the intertidal area. Counting was done in synchronous manner at Tsim Bei Tsui police jetty and the Futian National Nature Reserve, Shenzhen. These low-tide counts were scheduled on the same days as high-tide counts.

### **3. Results**

All survey areas in Deep Bay and the Ramsar Site were covered in the winter months, including the Hong Kong Wetland Park at Tin Shui Wai and the Futian

National Nature Reserve in Shenzhen Special Economic Zone, China. The results of the six counts are summarized in table 2; results in full are provided in Appendix 1.

The peak monthly count of winter 2009-10 was the January count, in contrast to the previous year, when the peak count was in February. Compared to the previous year, this winter peak count dropped marginally by 1.6% of the whole Deep Bay figure, but increased significantly by 42% in the Ramsar site area. In comparison with the January count of last winter, this year's January count recorded higher figures for both the whole Deep Bay area and the Ramsar site. The figure for the whole Deep Bay area increased 8%, while that for the Ramsar site had a larger increase of 28% (table 1).

Table 1. Comparisons of winter peak monthly and January counts in the whole Deep Bay area and Mai Po Inner Deep Bay Ramsar Site, winter 2006-07, 2007-08, 2008-09 and 2009-10. The Ramsar site covers partly of the whole Deep Bay area and details refer to Map 2 and 3.

		Winter 2006-07	Winter 2007-08*	Winter 2008-09	Winter 2009-10*
Winter peak monthly count <sup>^</sup>	Deep Bay	70,303	90,132	78,155	76,882
	Ramsar Site	33,782	56,823	27,526	39,000
January count	Deep Bay	65,909	90,132	71,264	76,882
	Ramsar Site	46,732	56,823	30,539	39,000

<sup>^</sup>Winter peak monthly count is the highest count in the winter period.

\* The peak counts of the whole Deep Bay area was the January counts in winter 2007-08 and 2009-10.

Wintering Ducks and Grebes comprised the largest count this winter with a figure of 28,700 in the January count. Shorebirds were the second largest group this winter with a count of 23,926, also in the January count. Ducks and Grebes declined 25% (winter 2008-09: 38,099 birds) and shorebirds remained similar with a very small decrease of 0.6% (winter 2008-09, 24,069 birds) from the same figure of the previous winter. The peak count of Gulls and Terns in this winter was 11,331, very similar to the figures of the previous two winters: 11,212 birds in winter 2008-09 and 11,787 birds in winter 2007-08. Figures of each waterbird group in the winter 2009-10 are listed in table 2.



Table 2. Numbers of waterbird counts, winter 2009-2010 by groups and areas.

Group	Site	Oct	Nov	Dec	Jan	Feb	Mar
Cormorants	Deep Bay area	2,964	7,876	6,585	9,045	10,758	4,829
	Ramsar site	2,822	4,595	5,940	5,661	4,690	3,761
	Starling Inlet	0	9	7	270	18	28
Ardeids	Deep Bay area	2,476	2,665	3,353	3,357	2,792	1,963
	Ramsar site	1,311	1,169	1,944	1,948	1,791	1,177
	Starling Inlet	277	200	209	163	178	242
Ducks and grebes	Deep Bay area	3,754	15,113	12,920	28,700	20,557	5,124
	Ramsar site	151	9,060	7,486	12,219	12,896	3,391
	Starling Inlet	0	12	22	15	29	29
Rails and Coots	Deep Bay area	83	243	122	523	323	160
	Ramsar site	47	67	60	94	249	81
	Starling Inlet	3	21	25	22	27	20
Shorebirds	Deep Bay area	5,621	10,451	16,762	23,926	21,340	16,947
	Ramsar site	4,364	8,787	6,367	12,916	16,902	9,794
	Starling Inlet	9	17	21	38	1	1
Gulls and terns	Deep Bay area	32	335	4,181	11,331	7,541	3,953
	Ramsar site	13	263	3,796	6,162	2,808	2,153
	Starling Inlet	0	0	0	0	0	0
Total	Deep Bay area	14,930	36,683	43,923	76,882	63,311	32,976
	Ramsar site	8,708	23,941	25,593	39,000	39,336	20,357
	Starling Inlet	289	259	284	508	253	320

NC = no count, No count was made at Starling Inlet in March.

Peak counts for each waterbird group since winter 2001-02 are shown in table 3, which indicate trends of each waterbird group in recent winters. Numbers of wintering Great Cormorants increased this winter after a decline last winter. Ardeids recorded the lowest numbers this winter, though numbers have fluctuated over the years. Ducks and Grebes also saw a drop in their numbers after the high counts of the three previous winters. Rails and coots became less numerous recently and the trend has continued in the last two winters after a small increase of their numbers. Shorebirds have boosted their numbers in recent winters and remained relatively high this winter. Finally, Gulls and Terns have become stable in a range of 11-12,000 individuals in recent winters.

Table 3. Peak numbers of different waterbird groups in the Deep Bay area during the mid-winter period (i.e. December to February) from 2001 to 2010.

Winter	Cormorants	Ardeids	Ducks and Grebes	Rails and coots	Shore-birds	Gulls and Terns
2001-02	6,230 (Jan)	4,400 (Jan)	18,987 (Dec)	195 (Jan)	10,242 (Jan)	13,302 (Jan)
2002-03	7,959 (Jan)	4,702 (Jan)	20,203 (Jan)	219 (Dec)	9,849 (Feb)	13,191 (Jan)
2003-04 ^	8,964 (Jan)	3,963 (Dec)	16,856 (Feb)	362 (Jan)	12,856 (Jan)	8,469 (Dec)
2004-05	9,552 (Jan)	6,425 (Dec)	22,521 (Jan)	384 (Feb)	9,806 (Feb)	9,346 (Dec)
2005-06	10,347 (Jan)	4,345 (Jan)	19,657 (Feb)	597 (Dec)	13,695 (Feb)	14,417 (Feb)
2006-07	10,081 (Jan)	4,396 (Dec)	33,779 (Feb)	798 (Feb)	19,054 (Feb)	12,000 (Jan)
2007-08	11,144 (Jan)	3,549 (Jan)	35,066 (Jan)	866 (Jan)	27,720 (Jan)	11,787 (Jan)
2008-09	8,736 (Jan)	4,384 (Feb)	38,099 (Feb)	460 (Jan)	24,069 (Feb)	11,212 (Dec)
2009-10	10,758 (Feb)	3,357 (Jan)	28,700 (Jan)	523 (Jan)	23,926 (Jan)	11,331 (Jan)

^ Counts in mid-winter period of winter 2003-04 were modified by additional counts. Details are referred to Part II: additional counts of waterbirds in Deep Bay Intertidal area in January and February 2004 in Yu (2004) and Anon. (2005).

In order to avoid stochastic biases from using the January count alone and to obtain a more accurate picture of numbers of waterbirds that depend on Deep Bay for at least some part of the winter, the total winter peak count in the mid-winter period (December to February) was also used. This winter the total peak count was 87,379 birds, including 1,122 unidentified shorebirds. This figure is similar to the last winter's figure of 87,633 birds. This is one of the highest sums of peak species counts in winter period. Peak numbers of each waterbird species in mid-winter period are shown in Appendix 2.

Low-tide count was again carried out in the intertidal area at Tsim Bei Tsui Police jetty and Futian National Nature Reserve, Shenzhen in December, January and February. The figures for certain waterbird groups could be amended with using

higher counts obtained in the low tide count. Ducks and Grebes had higher numbers in December and January low tide counts, Gulls and Terns also had a higher count in the January low tide counts. Good visibility is the main reason for obtaining this additional information of waterbird numbers. High tide in February was higher than those in the December and January, and so the high tide count provided a better situation for counting than that in the low tide period. The figures used in the report have been adjusted with combining high figures obtained from both high and low tide counts. Figures of different waterbird groups from the low-tide counts are listed in table 4 and details are shown in the Appendix 3.

Table 4. Numbers of waterbird groups recorded in the Deep Bay area during low-tide counts, winter 2009-10. Numbers in parenthesis are the figures from the Ramsar Site area.

	December 2009	January 2010	February 2010
Cormorants	0 (0)	3,089 (0)	383 (0)
Ardeids	0 (0)	300 (0)	527 (163)
Ducks, grebes and pelicans	12,920 (750)	26,672 (3,383)	18,601 (8,731)
Rails and Coots	68 (0)	374 (0)	10 (0)
Waders	8,808 (0)	13,029 (0)	16,574 (2,884)
Gulls and terns	3,567 (3,250)	10,738 (6,162)	7,541 (946)
Total	25,664 (4,000)	54,202 (9,545)	43,636 (12,724)
High-tide count total	43,923 (25,593)	76,882 (39,000)	63,311 (39,336)

The ten most numerous waterbird species recorded in the Deep Bay area were (in descending order): Northern Shoveler *Anas clypeata* (20,008), Pied Avocet *Recurvirostra avousetta* (13,883), Great Cormorant *Phalacrocorax carbo* (10,758), Black-headed Gull *Larus ridibundus* (10,575), Tufted Duck *Aythya fuligula* (4,871), Kentish Plover *Charadrius alexandrinus* (4,303), Eurasian Wigeon *Anas penelope* (3,780), Northern Pintail *Anas acuta* (2,502), Dunlin *Calidris alpina* (2,500) and Marsh Sandpiper *Tringa stagnatilis* (2,310). These ten commonest species contributed to a total figure of 74,890 individuals, constituting 86% of the total winter peak number of all the waterbird. Of these high numbers, some species presented high numbers or large proportion of the high numbers in the Futian National Nature Reserve, Shenzhen, including Northern Shoveler, Black-headed Gull, Kentish Plover and Dunlin.

### 3.1 Species of conservation significance

Some species that occur in the Deep Bay Area are of conservation significance due to their being listed as globally threatened by BirdLife International (2000, 2004a, 2009a, 2009b), or because they are species for which Deep Bay supports, or may support, at least 1% of regional or flyway population, as used for implementing the Ramsar Convention criterion 3c. The '1% of regional or flyway population' is based on information provided by Wetlands International (2006) and Li *et al.* (2009). Brief reviews of these important waterbird species are provided below.

**Dalmatian Pelican** *Pelcanus crispus*

Vulnerable

Single bird was recorded in a short period around the December count. The regional population is estimated as low as only 30 individuals (Yu and Chen 2008).

**Great Cormorant** *Phalacrocorax carbo*

An additional coordinated roost count at Mai Po Nature Reserve and Nam Sang Wai in January count recorded a total of 9,045 individuals, a small increase of 3.5% from the previous year's same figure. But the highest count in this winter was 10,758 recorded in the February count. The 1% regional population is set at 1,000 individuals (Wetlands International 2006, Li *et al.* 2009) and the Deep Bay area supported about 9-10% of the regional population of this species in winter 2009-10.

**Black-faced Spoonbill** *Platalea minor*

Endangered

The peak count of this globally endangered bird in winter 2009-10 was 496 individuals recorded in the January count, of which a total of 482 birds were present within Hong Kong territory. This is a new high figure for this flag-ship species for Hong Kong. During the 2010 International Black-faced Spoonbill Census, the total world known wintering population was at least 2,346 individuals in the East Asia region (HKBWS unpub. data). Therefore, the Deep Bay area could support 21% of the world population of this species.

**Falcated Duck** *Anas falcata*

Near Threatened

Only one individual was recorded in the January and February count, another poor winter for this declining species.

**Northern Pintail** *Anas acuta*

The 1% regional population is set at 2,500 individuals (Wetlands International 2006, Li *et al.* 2009). A total of 2,502 individuals were counted in the February count, meaning that the Deep Bay area to support 1% of the regional population of this species this winter. This species is one of the most common ducks wintering in the

Deep Bay area but there have been fluctuations of numbers in recent winters from only 397 individuals in the previous winter to a high of 3,613 individuals in winter 2007-08.

**Northern Shoveler** *Anas clypeata*

An extraordinary peak count of 20,008 was recorded in the January count, 38% higher than the previous peak count of 14,523 individuals in winter 2007-08. The regional population is set at 5,000 individuals (Wetlands International 2006, Li *et al.* 2009) and therefore the Deep Bay area supports 4% of the regional population. Most birds were present at Futian National Reserve where a total of 18,943 birds were counted.

**Tufted Duck** *Aythya fuligula*

The highest count in this winter was 4,871 individuals recorded in the February count. Though a 28% decrease from the peak count of the previous year, this is still a good figure of this species for the Deep Bay area and the previous year peak figure was a very high figure. The 1% regional population is set at 2,500 individuals (Wetlands International 2006, Li *et al.* 2009) and so the Deep Bay area supports approximate 2% of the regional population. Unlike Northern Shoveler, this species was largely present (4,528 birds) in Hong Kong side.

**Pied Avocet** *Recurvirostra avosetta*

A total of 13,883 individuals recorded in the February count was the peak count this winter, the second highest count of this species in the Deep Bay area after the figure of 16,123 recorded in winter 2007-08. The bulk of this flock (11,881 birds) was present on the Hong Kong side. This figure was similar number to the previous year (i.e. 13,061 birds) and there was only a 6% increase. The 1% regional population is set at 1,000 individuals (Wetlands International 2006 and Li *et al.* 2009), hence this winter peak count represents 13% of the regional population.

**Kentish Plover** *Charadrius alexandrinus*

A large flock in a total of 4,303 individuals was recorded in the January count at Futian, the peak count of this winter. This is also the new highest figure of this species in the Deep Bay area and the previous peak count was 4,000 individuals recorded at Hong Kong side in December 1992. Also in the January count, a group of 470 birds were counted from Mai Po boardwalk in the falling tide period which was presumably part of this flock. The 1% regional population level is set at 1,000 individuals (Wetlands International 2006, Li *et al.* 2009) and so this new high figure

constituted 4.3% of the regional population.

**Black-tailed Godwit** *Limosa limosa* Near Threatened

In the mid-winter period, the peak count was 752 in the January count, a decrease of 4% from the previous year but still a high figure. Later in the winter, the number rose to a higher level at 1,481 birds in the March count which could have included some northward bound passage birds. This species is common in spring and there is a regular wintering group in Hong Kong (Carey *et al.* 2002).

**Eurasian Curlew** *Numenius arquata* Near Threatened

The peak count was 1,075 individuals in the January count, similar to the previous year's figure of 1,065. The 1% regional population is set at 350 individuals (Wetlands International 2006, Li *et al.* 2009) and this wintering population constitutes 3% of the regional population.

**Common Greenshank** *Tringa nebularia*

In the mid-winter period a total of 1,146 birds were present in the February count, which was the peak count. This was a significant decrease of 33% from the previous year's figure but it was an unusually high figure and most birds were present on the Futian side. Similar to Black-tailed Godwit, this species also saw a higher number present in early spring, a total of 1,976 in the March count that includes a count of 1,245 at Hong Kong Wetland Park, Tin Shui Wai. This is a new high figure for this species in the Deep Bay area. Also, these figures constituted 1-2% of the regional population as the 1% regional population is set at 1,000 individuals (Wetlands International 2006, Li *et al.* 2009).

**Nordmann's Greenshank** *Tringa guttifer* Endangered

A single bird of this endangered species was recorded in both January and February counts. The global population of this species is estimated at 500-1,000 individuals (BirdLife International 2009a).

**Saunders's Gull** *Larus saundersi* Vulnerable

The peak count this winter was 74 in the February count, a 42% increase from the previous year, and a relatively high count compared to recent winters. The global population is estimated to lie in a range of 7,100 to 9,600 individuals (BirdLife International 2009b) and the 1% population threshold value is set at 85 birds (Wetland International 2006).

### 3.2 Other notable counts

#### **Greater Crested Grebe** *Podiceps cristatus*

The 1% regional population level is set at 375 individuals (Wetlands International 2006, Li *et al.* 2009) and the wintering population in the Deep Bay area sometimes could reach to this level. The peak count in this winter was 215 birds in the January count and therefore it did not meet the threshold level in this winter.

#### **Great Egret** *Egretta alba*

Usually 1% (i.e. 1,000 individuals by Wetlands International 2006 and Li *et al.* 2009) of the regional population utilizes Deep Bay area in winter. The peak count this winter was 882 in the December count, a 10% decrease from the previous year's peak count.

#### **Common Shelduck** *Tadorna tadorna*

This species was once a common winter visitor in Deep Bay with a peak count of 4,000 individuals, but there has been a severe decline of numbers in recent years. Only six individuals were noted in the midwinter period, lower than nine and 18 birds in the previous two winters.

#### **Common Teal** *Anas crecca*

The peak count this winter was only 627 birds in the January count, a drastic decline of 73% from the peak count of 2,332 in the previous winter. This species is one of the most numerous ducks wintering in the Deep Bay area (Carey *et al.* 2002) and this sharp decline is of conservation concern locally.

#### **Eurasian Coot** *Fulica atra*

This species was more numerous in the past with thousands of birds present in the Deep Bay area but there has been a large decline of numbers in recent winters. The peak count in this winter was 354 in the January count, similar to the figure of 325 in the previous winter.

#### **Little Ringed Plover** *Charadrius dubius*

The peak count in this winter period was 196 recorded in the November count, while 192 birds was the highest during the mid-winter period. These figures indicate a significant decline of 38% from the peak count of 315 birds in the previous winter. The 1% population level is set at 250 individuals (Wetlands International 2006, Li *et al.* 2009) and therefore the Deep Bay area did not support 1% regional population in this

winter.

### **Spotted Redshank** *Tringa erythropus*

This species also shows a decreasing trend in recent winters, compared with over 1,000 individuals in 1990s (Carey *et al.* 2002) but only 800 birds since 2003. This was a poor winter for this species because the peak count was only 186 birds in the February count, a significant decline of 73% from the previous year's peak count (i.e. 681 birds).

### **Black-headed Gull** *Larus ridibundis*

Once the most numerous waterbird species in the Deep Bay area, this is now showing a decline of its numbers from over 16,000 individuals in mid-1990s. The peak count in this winter was 10,575 in the January count, with a small decline of 5% from the previous year's peak count. Also, a significant proportion of 4,575 birds were recorded in the Futian side in this January count and only 6,000 birds utilized the mudflat area on Hong Kong side during low tide period. Numbers recorded in high tide period were lower than this figure. This indicates that the birds may have shifted their roosting areas to the Shenzhen side from the Hong Kong side.

### **Conclusion**

Trends of total winter peak count and the January count in figure 1 show that waterbird numbers in the Deep Bay area increased from a relatively low count in winter 2003-04 to reach the highest number ever in winter 2007-08. Since then the numbers have been relatively stable. Therefore, the Deep Bay area already has high numbers in four consecutive winters and this is a very encouraging sign for the conservation of waterbirds in the Deep Bay area.

Low-tide counts this winter were successful to provide additional good counts of ducks and gulls in the Futian area. Situation in Futian National Nature Reserve is still improving as more waterbirds utilize the area, especially in the low-tide period. Small-sized shorebirds, mainly Kentish Plover and Dunlin, were present in high numbers in front of Mai Po boardwalk in early to mid-1990s but numbers have decreased subsequently. In this winter large flocks of both species were found again in the Futian area. The situation in Hong Kong has also improved and figure 1 shows numbers of waterbirds in the Ramar site area also increased this winter. These favourable conditions contributed to the high number of waterbirds in the Deep Bay area in this winter.



Though waterbird numbers were high this winter, this is composed of high counts of a few dominant species such as Northern Shoveler and Pied Avocet. In actual fact, other common waterbirds are declining in numbers this winter, for example: Common Teal and Spotted Redshank. Our observations also give the impression that wintering ducks are less diverse than in the past because Northern Shovelers and Tufted Duck predominate. On the other hand, other species which could have significant regional population in the Deep Bay area are showing fluctuating numbers, which would need more data to indicate their trends. These species include Greater Crested Grebe, Great Egret, Eurasian Coot and Little Ringed Plover.

Some disturbance events in the Deep Bay area including the Ramsar Site still occurred over the last twelve months. Cross border fishermen were found operating in the mudflat area in front of the Mai Po boardwalk hide. More attention should be given to any illegal fishing activities in the mudflat areas of Deep Bay during the hovercraft patrols by AFCD to minimize nuisance caused by cross border fishermen in the mudflat area.

### **Acknowledgements**

I would like to thank the following counters for participating the counts: John Allcock, Geoff Carey, Mike Chalmers, Gary Chow, Forrest Fong, Vivian Fu, Martin Hale, John and Jemi Holmes, Tony Hung, W.M. Hung, Alan Lam, H.F. Lee, Roger H. Lee, Mike Leven, R.W. Lewthwaite, K.W. Ma, Karl Ng, C.C. Pang, Carmen Or, Y.H. Sung, Captain Wong, H.K. Ying, Shenzhen Bird Watching Society and AFCD colleagues.

### **References**

**Anon. 2009.** Winter 2008-09 Report on Waterbird Monitoring at the Mai Po Inner Deep Bay Ramsar Site. Report by Hong Kong Bird Watching Society to the Agriculture, Fisheries and Conservation Department, Hong Kong SAR Government.

**BirdLife International. 2000.** Threatened Birds of the World. Lynx Edicions and BirdLife International. Barcelona and Cambridge, UK.

**BirdLife International. 2004a.** Threatened Birds of the world 2004. CD-ROM. Cambridge, UK: BirdLife International.

**BirdLife International. 2009a.** Species factsheet: *Anas falcata*. Download from <http://www.birdlife.org> on 9/7/2009.

**BirdLife International. 2009b.** Species factsheet: *Limosa limosa*. Download from <http://www.birdlife.org> on 9/7/2009.

**BirdLife International. 2009c.** Species factsheet: *Tringa guttifer*. Download from <http://www.birdlife.org> on 9/7/2009.

**BirdLife International. 2009d.** Species factsheet: *Larus saundersi*. Download from <http://www.birdlife.org> on 9/7/2009.

**Carey, G.J. 2002.** Waterbird Count Handbook: A guide for participants in the waterbird counts in Hong Kong. 2<sup>nd</sup> edition. Hong Kong Bird Watching Society. Hong Kong.

**Li Z.W.D., Bloem, A., Delany, S., Martakis G. and Quintero, J.O. 2009.** Status of waterbirds in Asia – Results of the Asian Waterbird Census: 1987-2007. Wetlands International. Kuala Lumpur, Malaysia.

**Wetlands International. 2006.** Waterbird Population Estimates – fourth edition. Wetlands International, Wageningen, The Netherlands.

**Yu, Y.T. and Chen Z.H. 2008.** Dalmatian Pelican *Pelecanus crispus*: the largest waterbird in East Asia, and the rarest? *BirdingASIA* 9: 62-66.

---

## Winter 2009-10 Report on Waterbird Monitoring at the Mai Po Inner Deep Bay Ramsar Site

### *Figure*

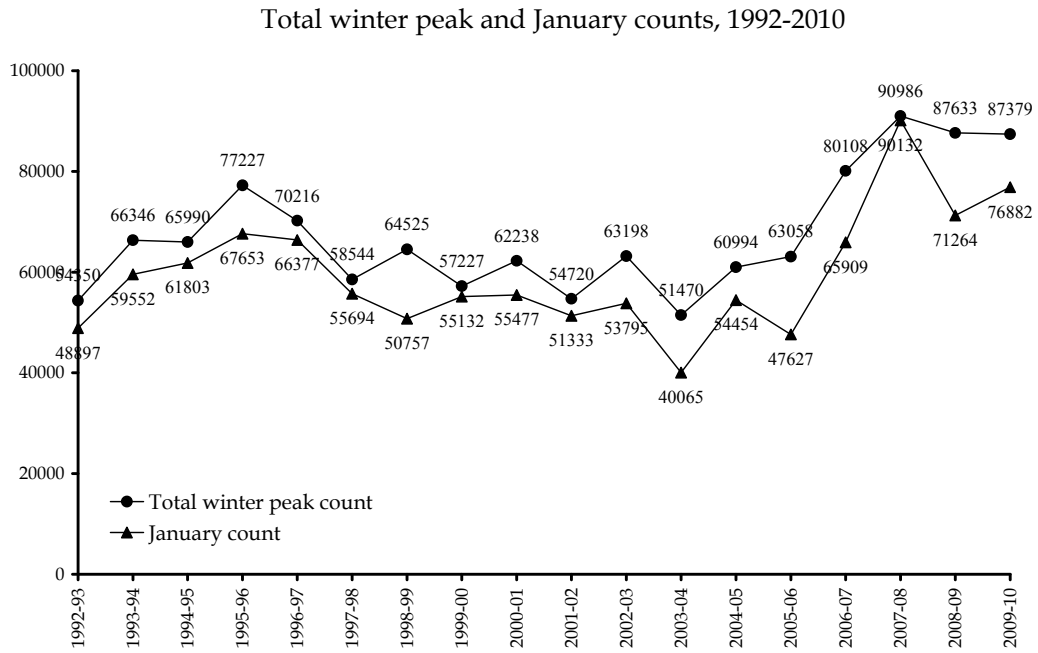


The Hong Kong Bird Watching Society Limited



Agriculture, Fisheries and Conservation Department

Figure 1. Total winter peak counts and January (mid-winter) counts, 1992-2010. Note: number of waterbird in winter 2003-04 was modified and details are referred to Anon. (2005). Data of winter 1997/98, 1998/99, 1999/00 and 2005/06 have been revised.



---

## Winter 2009-10 Report on Waterbird Monitoring at the Mai Po Inner Deep Bay Ramsar Site

### *Maps*

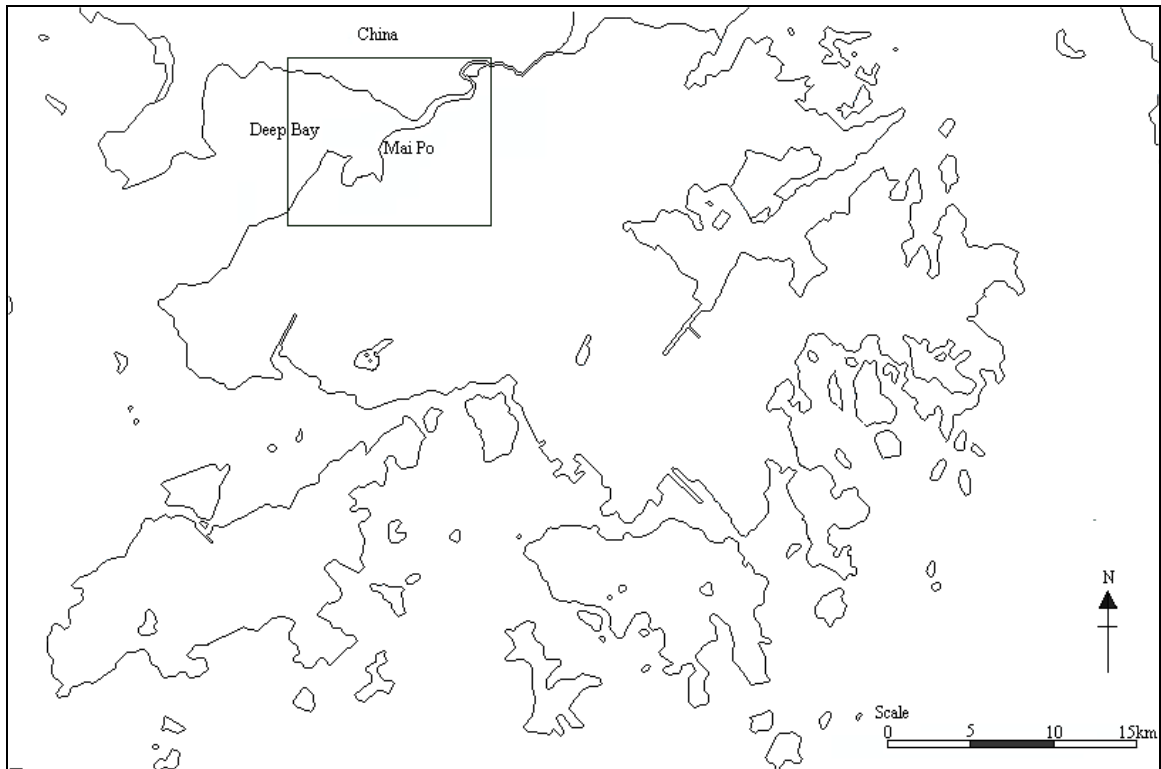


The Hong Kong Bird Watching Society Limited

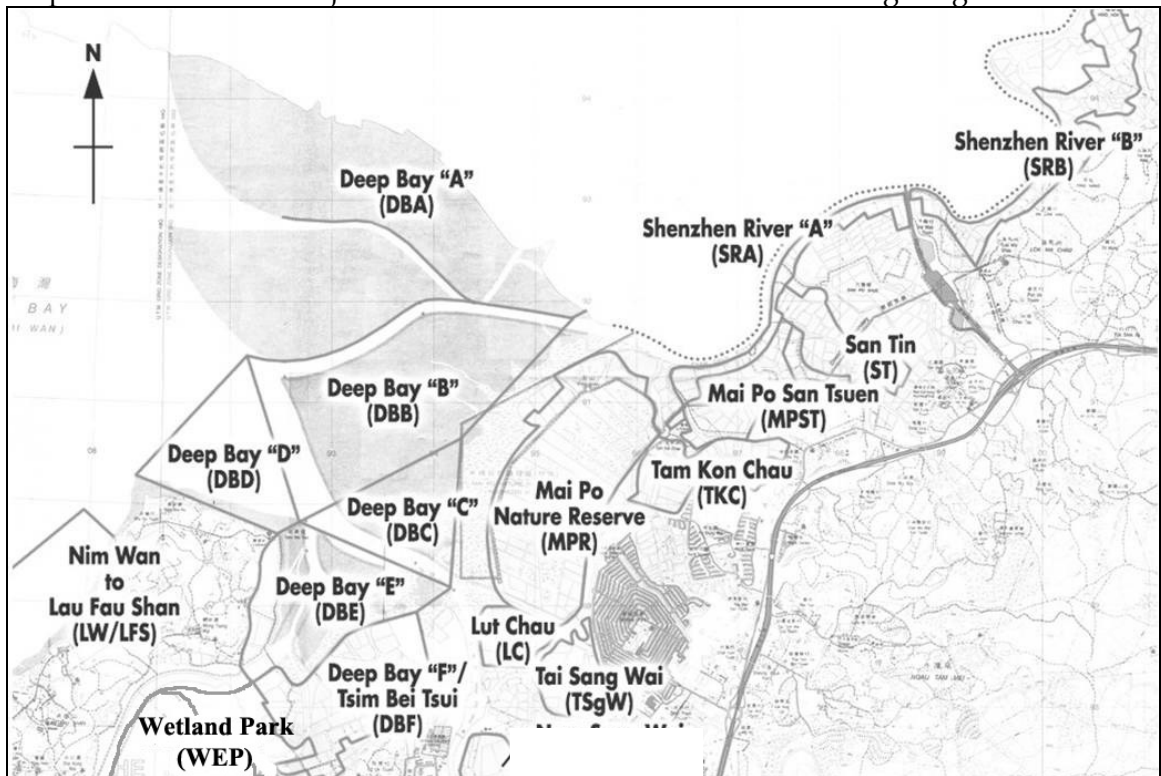


Agriculture, Fisheries and Conservation Department

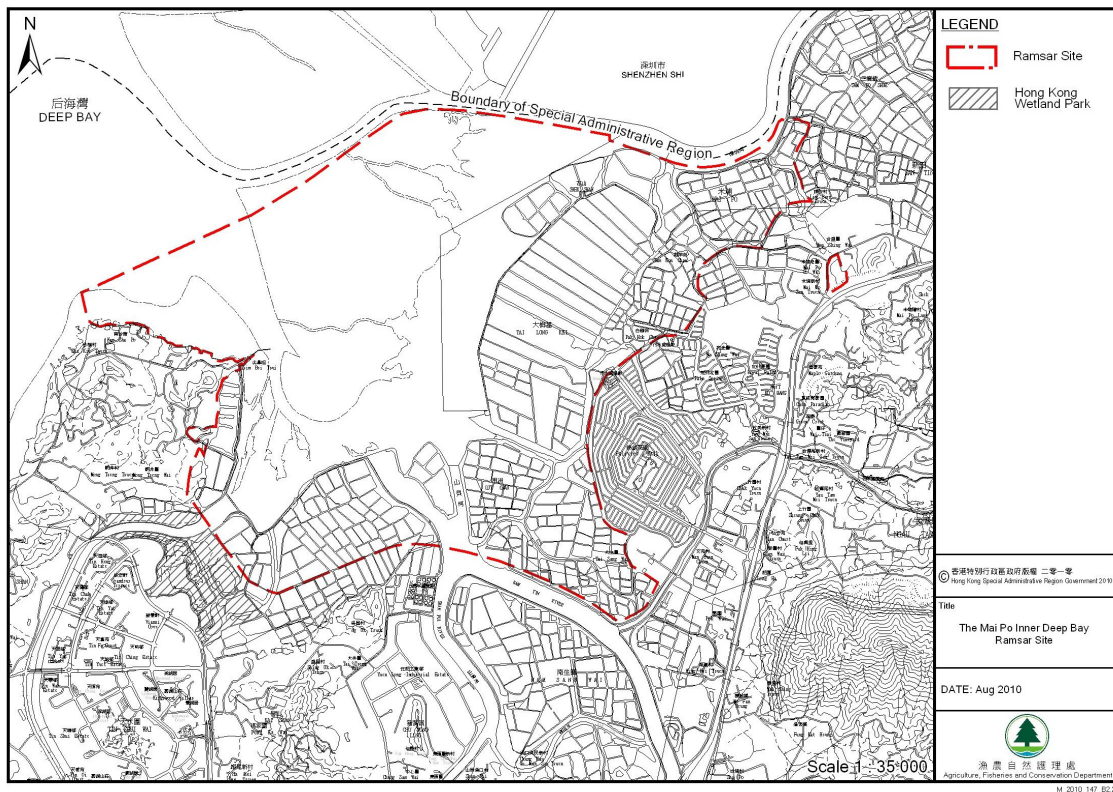
Map 1. Map of Hong Kong showing location of the Mai Po Inner Deep Bay Ramsar Site



Map 2. Locations of major count areas of the Waterbird Monitoring Programme



Map 3. Boundary of Mai Po Inner Deep Bay Ramsar site area.



Source: AFCD

---

## Winter 2009-10 Report on Waterbird Monitoring at the Mai Po Inner Deep Bay Ramsar Site

### *Appendix 1*



The Hong Kong Bird Watching Society Limited



Agriculture, Fisheries and Conservation Department



Summary of Waterbird Count, October 2009

SPECIES	SRA	SRB	DBA	DBB	DBC	DBD	DBE	DBF (TBT)	NW/LFS	WEP	TKC	LC	TSW	MPST	ST	MPNR	Ramsar ponds	Ramsar intertidal areas	Ramsar Site	DEEP BAY AREA	Starling Inlet
Little Grebe	25	4	6					13		1	23	0	26	7	0	33	60	0	93	138	
Great Crested Grebe																0			0	0	
Great Cormorant	102	11	6	180			1	20			7	2	4	74	15	2542	98	182	2822	2964	
Dalmatian Pelican																0			0	0	
Grey Heron	153	5	115	7	13	16	41	23	2	81	8	10	6	6	3	116	49	86	251	605	24
Purple Heron	1	1														5			5	7	
Great Egret	51	4	68	30	65	21	37	63	12	28	14	6	7	5	28	76	33	194	303	515	186
Intermediate Egret	6	0	1	2				0		4	1	0	1	0	0	5	2	2	9	20	2
Little Egret	10	6	219	21	26	80	25	29	25	38	32	77	101	43	35	190	253	164	607	957	55
Swinhoe's Egret																0			0	0	
Pacific Reef Egret																0			0	0	1
Cattle Egret	7	0						0			14	23	16	0	2	8	39	0	47	70	
Chinese Pond Heron	45	12	27	4		4		3	5	8	32	0	13	22	27	13	62	8	83	215	2
Striated Heron	0	0						0			0	0	0	0	0	1	0	0	1	1	
B-c Night Heron	8	0	63	1				0			2	0	0	0	1	3	1	1	5	78	7
Yellow Bittern	0	0						0			0	0	0	0	0	0	0	0	0	0	
Cinnamon Bittern																0			0	0	
Great Bittern																0			0	0	
Black Stork																0			0	0	
Black-headed Ibis																0			0	0	
Eurasian Spoonbill																0			0	0	
Black-faced Spoonbill	6		2													0			0	8	
Common Shelduck																0			0	0	
Eurasian Wigeon	0	0	107					1			0	0	0	0	0	5	0	0	5	113	
Falated Duck																0			0	0	
Gadwall																0			0	0	
Baikal Teal																0			0	0	
Common Teal	61	0	20					0		16	0	0	0	0	0	0	0	0	0	97	
Mallard																0			0	0	
Spot-billed Duck																0			0	0	
Chinese Spotbill																0			0	0	
Burmese Spotbill																0			0	0	
Northern Pintail	33		80													1			1	114	
Garganey	2															24			24	26	
Northern Shoveler			208													0			0	208	
Common Pochard																0			0	0	
Baer's Pochard																0			0	0	
Tufted Duck			30													0			0	30	
Greater Scaup																0			0	0	
Red-breasted Merganser																0			0	0	
Duck sp.			3000		17		3									8		20	28	3028	
Slaty-breasted Rail																0			0	0	
Water Rail																0			0	0	
White-breasted Waterhen	7	3	2					5		1	3	0	4	3	2	7	15	0	22	37	1
Watercock																0			0	0	
Common Moorhen	3	0	9					4		10	0	0	0	0	0	20	5	0	25	46	2
Eurasian Coot																0			0	0	
Pheasant-tailed Jacana	2									3						0			0	5	
Greater Painted Snipe	1															0			0	1	

Black-winged Stilt	2	1	433					27		39			1			52	28		80	<b>555</b>	
Pied Avocet																19			19	<b>19</b>	
Oriental Pratincole																0			0	<b>0</b>	
Northern Lapwing																0			0	<b>0</b>	
Grey-headed Lapwing																0			0	<b>0</b>	
Pacific Golden Plover			2													0			0	<b>2</b>	
Grey Plover																14			14	<b>14</b>	
Common Ringed Plover																0			0	<b>0</b>	
Little Ringed Plover	12	0	2					0	7	8	80	3	15	0	0	0	96	0	96	<b>127</b>	
Kentish Plover																0			0	<b>0</b>	
Lesser Sand Plover																0			0	<b>0</b>	
Greater Sand Plover																0			0	<b>0</b>	6
Black-tailed Godwit																511			511	<b>511</b>	
Bar-tailed Godwit																2			2	<b>2</b>	
Whimbrel			1													1			1	<b>2</b>	
Eurasian Curlew																103			103	<b>103</b>	
Far Eastern Curlew																0			0	<b>0</b>	
Spotted Redshank																97			97	<b>97</b>	
Common Redshank			84													220			220	<b>304</b>	
Marsh Sandpiper			38						4							2143			2143	<b>2185</b>	
Common Greenshank			97						245							988			988	<b>1330</b>	3
Nordmann's Greenshank																0			0	<b>0</b>	
Green Sandpiper	1	3						0	1	2	1	4	1	1	1	7	0	8	<b>15</b>		
Wood Sandpiper	50	0	109					0	46	3	2	0	0	0	20	5	0	25	<b>230</b>		
Terek Sandpiper			10												0			0	<b>10</b>		
Common Sandpiper	4	4	6				1	4	3	4	10	7	0	7	12	5	25	1	31	<b>67</b>	
Grey-tailed Tattler																0			0	<b>0</b>	
Ruddy Turnstone																0			0	<b>0</b>	
Red-necked Phalarope																0			0	<b>0</b>	
Pintail Snipe																0			0	<b>0</b>	
Swinhoe's Snipe																0			0	<b>0</b>	
Pintail/Swinhoe's Snipe	2															0			0	<b>2</b>	
Common Snipe	10		3						1							2			2	<b>16</b>	
Long-billed Dowitcher																1			1	<b>1</b>	
Asian Dowitcher																0			0	<b>0</b>	
Red Knot																0			0	<b>0</b>	
Great Knot																22			22	<b>22</b>	
Sanderling																0			0	<b>0</b>	
Red-necked Stint																0			0	<b>0</b>	
Little Stint																0			0	<b>0</b>	
Temminck's Stint																0			0	<b>0</b>	
Long-toed Stint										1						0	1		1	<b>1</b>	
Pectoral Sandpiper																0			0	<b>0</b>	
Sharp-tailed Sandpiper																0			0	<b>0</b>	
Dunlin																0			0	<b>0</b>	
Curlew Sandpiper																0			0	<b>0</b>	
Spoon-billed Sandpiper																0			0	<b>0</b>	
Broad-billed Sandpiper																0			0	<b>0</b>	
Ruff																0			0	<b>0</b>	
Small wader spp.																0			0	<b>0</b>	
Wader sp.																0			0	<b>0</b>	
Black-tailed Gull																0			0	<b>0</b>	
Heuglin's Gull																0			0	<b>0</b>	
Yellow-legged Gull																0			0	<b>0</b>	

Slaty-backed Gull																		0		0	0	
Pallas's Gull																		0		0	0	
Large Gull spp.																		0		0	0	
Brown-headed Gull																		0		0	0	
Black-headed Gull	0	0	2				0				0	0	0	0	0	1	0	2	3	3		
Saunders's Gull																		0		0	0	
Whiskered Tern											10		5	1	13	0	10		10	29		
White-winged Tern																		0		0	0	
Gull-billed Tern																		0		0	0	
Caspian Tern																		0		0	0	
<b>Total</b>	<b>604</b>	<b>54</b>	<b>4748</b>	<b>247</b>	<b>121</b>	<b>121</b>	<b>108</b>	<b>192</b>	<b>54</b>	<b>538</b>	<b>242</b>	<b>131</b>	<b>203</b>	<b>169</b>	<b>139</b>	<b>7259</b>	<b>789</b>	<b>660</b>	<b>8708</b>	<b>14930</b>	<b>289</b>	

	Deep Bay Area	%	Ramsar Site	%	SI																	
Cormorants	2964	19.9	2822	32.4	0	0																
Ardeids etc	2476	16.6	1311	15.1	277	0																
Ducks, grebes, pelicans	3754	25.1	151	1.7	0	0																
Rails, Coot etc	83	0.6	47	0.5	3	0																
Waders	5621	37.6	4364	50.1	9	0																
Gulls and terns	32	0.2	13	0.1	0	0																
<b>TOTAL</b>	<b>14930</b>		<b>8708</b>		<b>289</b>	<b>0</b>																

Date of count: 18 Oct 2009  
n/c = site not counted High tide measured at TBT:  
# indicates count consists of or includes a count made up to one week either side of the count date  
% = count made at evening roost

Wetland-dependant species																						
Species	SRA	SRB	DBA	DBB	DBC	DBD	DBE	DBF (TBT)	NW/LFS	WEP	TKC	LC	TSW	MPST	ST	MPNR	Ramsar ponds	Ramsar intertidal areas	Ramsar Site	DEEP BAY AREA	Starling Inlet	
Osprey			6	1	4		1									0			0	12		
Black Kite	3	4	11	1				4			0	1	3	2	7	20	8	1	29	56	2	
White-bellied Sea Eag																0			0	0		
Eastern Marsh Harrier	2		4													1			1	7		
Common Buzzard																0			0	0		
Greater Spotted Eagle	0	0						0			0	0	0	0	1	0	0	0	0	1		
Imperial Eagle	0	0						0			0	0	0	0	0	0	0	0	0	0		
Peregrine Falcon																0			0	0		
Pied Kingfisher	3	1	3					1			0	0	0	0	1	2	1	0	3	11	1	
Common Kingfisher	2	1	5					2			12	1	2	5	4	2	19	0	21	36		
White-throated Kingfisher	0	1	3				1	1	1	1	2	0	1	2	2	3	5	1	9	18		
Black-capped Kingfisher	0	0	1	1				1			0	0	0	0	0	0	1	1	2	3		
Red-billed Starling	0	0						0			0	0	0	0	0	0	0	0	0	0		
Collared Crow	0	0	2				1	5			0	9	0	0	0	6	14	1	21	23		

Summary of Waterbird Count, November 2009

SPECIES	SRA	SRB	DBA	DBB	DBC	DBD	DBE	DBF (TBT)	WEP	NW / LFS	TKC	LC	TSW	MPST	ST	MPNR	Ramsar ponds	Ramsar intertidal areas	Ramsar Site	DEEP BAY AREA	Starling Inlet
Little Grebe	25	54	15					14	3	4	17	0	25	4	15	15	54	0	69	191	5
Great Crested Grebe			21		4		1			1						0		5	5	27	
Great Cormorant	255	154	2492					64	238	4	20	39	15	295	101	4199	396	0	4595	7876	9
Dalmatian Pelican																0			0	0	
Grey Heron	121	23	102	47	18	26	82	31	84	9	11	22	17	16	26	285	59	173	517	920	40
Purple Heron	1															2			2	3	
Great Egret	12	15	33	43	9	18	40	20	4	57	8	12	8	3	123	136	42	110	288	541	114
Intermediate Egret	5	4		2				0	2		0	0	1	0	4	9	1	2	12	27	
Little Egret	11	24	62	83		6	3	33	10	86	17	6	17	3	343	41	70	92	203	745	32
Swinhoe's Egret																0			0	0	
Pacific Reef Egret																0			0	0	
Cattle Egret	1	6						0			0	1	4	0	9	0	5	0	5	21	
Chinese Pond Heron	30	25	26	3		1	1	3	3	18	11	1	8	9	28	16	30	5	51	183	4
Striated Heron	0	0						0			0	0	0	0	0	0	0	0	0	0	
B-c Night Heron	1	8	1			1		0			0	0	0	1	0	6	1	1	8	18	10
Yellow Bittern	0	0	1					0			0	0	0	0	0	0	0	0	0	1	
Cinnamon Bittern																0			0	0	
Great Bittern																0			0	0	
Black Stork																0			0	0	
Black-headed Ibis																0			0	0	
Eurasian Spoonbill			1													0			0	1	
Black-faced Spoonbill	14	5	31					15	7	57	4	1		1	5	65	3	15	83	205	
Common Shelduck																0			0	0	
Eurasian Wigeon	34	0	86	290	1	12	43	0	46	4	0	0	0	0	0	1	0	346	347	517	
Falcated Duck																0			0	0	
Gadwall																0			0	0	
Baikal Teal																0			0	0	
Common Teal	39	5	16	7	6		5	0	109	2	1	0	0	0	0	14	0	18	32	204	7
Mallard																0			0	0	
Spot-billed Duck																0			0	0	
Chinese Spotbill																5			5	5	
Burmese Spotbill																0			0	0	
Northern Pintail	25		25	260	11				45							115		271	386	481	
Garganey	7								53							0			0	60	
Northern Shoveler	7		5389	5440	330		12		14		2					77		5782	5859	11271	
Common Pochard																0			0	0	
Baer's Pochard																0			0	0	
Tufted Duck					1820		32									5		1852	1857	1857	
Greater Scaup																0			0	0	
Red-breasted Merganser																0			0	0	
Duck sp.								500								0		500	500	500	
Slaty-breasted Rail																0			0	0	
Water Rail																0			0	0	
White-breasted Waterhen	2	2	2	3			2	3	2	3	4	1	0	0	1	4	3	5	12	29	3
Watercock																0			0	0	
Common Moorhen	16	0	36				1	15	25		13	1	0	0	4	31	23	1	55	142	18
Eurasian Coot	1		71													0			0	72	

Pheasant-tailed Jacana	1																0		0	1	
Greater Painted Snipe																	0		0	0	
Black-winged Stilt	3		76	4				3						2		2		4	6	90	
Pied Avocet			212	2016												0		2016	2016	2228	2
Oriental Pratincole																0			0	0	
Northern Lapwing																0			0	0	
Grey-headed Lapwing			2													0			0	2	
Pacific Golden Plover			2	3												0		3	3	5	
Grey Plover				255												0		255	255	255	
Common Ringed Plover																0			0	0	
Little Ringed Plover	17	0	2	22				2	7	36	48	36	6	7	13	0	84	22	106	196	
Kentish Plover			450	990						130						0		990	990	1570	1
Lesser Sand Plover				18												0		18	18	18	7
Greater Sand Plover																0			0	0	1
Black-tailed Godwit				420												0		420	420	420	
Bar-tailed Godwit				2												0		2	2	2	
Whimbrel				2						2						0		2	2	4	
Eurasian Curlew				128												0		128	128	128	
Far Eastern Curlew				2												0		2	2	2	
Spotted Redshank				1												3		1	4	4	
Common Redshank			70	285				6								0		285	285	361	
Marsh Sandpiper				916			150		118		6					17	5	1066	1088	1207	
Common Greenshank			88	230					132	14				1		71	1	230	302	536	5
Nordmann's Greenshank				1												0		1	1	1	
Green Sandpiper	1	8						0		2	2	1	7	1	4	0	11	0	11	26	
Wood Sandpiper	14	6	84	20				0			13	1	4	1	4	0	15	20	35	147	
Terek Sandpiper				1												0		1	1	1	
Common Sandpiper	3	11	6	3		2		1	4	11	4	7	5	5	15	1	20	5	26	78	
Grey-tailed Tattler																0			0	0	
Ruddy Turnstone																0			0	0	
Red-necked Phalarope																0			0	0	
Pintail Snipe																0			0	0	
Swinhoe's Snipe																0			0	0	
Pintail/Swinhoe's Snipe																0			0	0	
Common Snipe	2	15	16					1							1	0	1		1	35	
Long-billed Dowitcher																0			0	0	
Asian Dowitcher																0			0	0	
Red Knot				4												0		4	4	4	
Great Knot				34												0		34	34	34	
Sanderling																0			0	0	
Red-necked Stint				4	28											0		28	28	32	
Little Stint																0			0	0	
Temminck's Stint	6		2	15												0		15	15	23	
Long-toed Stint	1			2												0		2	2	3	
Pectoral Sandpiper																0			0	0	
Sharp-tailed Sandpiper																0			0	0	
Dunlin			36	3000												0		3000	3000	3036	1
Curlew Sandpiper																0			0	0	
Spoon-billed Sandpiper#				1												0		1	1	1	
Broad-billed Sandpiper				1												0		1	1	1	
Ruff																0			0	0	
Small wader spp.																0			0	0	
Wader sp.																0			0	0	

Black-tailed Gull																0		0	0		
Heuglin's Gull				3	1											0	4	4	4		
Yellow-legged Gull																0		0	0		
Slaty-backed Gull																0		0	0		
Pallas's Gull																0		0	0		
Large Gull spp.																0		0	0		
Brown-headed Gull																0		0	0		
Black-headed Gull	0	0	72	245				0			0	0	0	0	0	0	245	245	317		
Saunders's Gull				12												0	12	12	12		
Whiskered Tern																0		0	0		
White-winged Tern																0		0	0		
Gull-billed Tern																0		0	0		
Caspian Tern				2												0	2	2	2		
<b>Total</b>	<b>655</b>	<b>365</b>	<b>9532</b>	<b>14844</b>	<b>2200</b>	<b>66</b>	<b>387</b>	<b>693</b>	<b>966</b>	<b>387</b>	<b>178</b>	<b>128</b>	<b>117</b>	<b>348</b>	<b>697</b>	<b>5120</b>	<b>824</b>	<b>17997</b>	<b>23941</b>	<b>36683</b>	<b>259</b>
	<b>Deep Bay Area</b>	<b>%</b>	<b>Ramsar Site</b>	<b>%</b>	<b>SI</b>																
<b>Cormorants</b>	<b>7876</b>	<b>21.5</b>	<b>4595</b>	<b>19.2</b>	<b>9</b>	<b>0</b>															
<b>Ardeids etc</b>	<b>2665</b>	<b>7.3</b>	<b>1169</b>	<b>4.9</b>	<b>200</b>	<b>0</b>															
<b>Ducks, grebes, pelicans</b>	<b>15113</b>	<b>41.2</b>	<b>9060</b>	<b>37.8</b>	<b>12</b>	<b>0</b>															
<b>Rails, Coot etc</b>	<b>243</b>	<b>0.7</b>	<b>67</b>	<b>0.3</b>	<b>21</b>	<b>0</b>															
<b>Waders</b>	<b>10451</b>	<b>28.5</b>	<b>8787</b>	<b>36.7</b>	<b>17</b>	<b>0</b>															
<b>Gulls and terns</b>	<b>335</b>	<b>0.9</b>	<b>263</b>	<b>1.1</b>	<b>0</b>	<b>0</b>															
<b>TOTAL</b>	<b>36683</b>		<b>23941</b>		<b>259</b>	<b>0</b>															
Date of count: 15 Nov 2009																					
n/c = site not counted																					
High tide measured at TBT:																					
# indicates count consists of or includes a count made up to one week either side of the count date																					
% = count made at evening roost																					
<b>Wetland-dependant species</b>																					
	<b>SRA</b>	<b>SRB</b>	<b>DBA</b>	<b>DBB</b>	<b>DBC</b>	<b>DBD</b>	<b>DBE</b>	<b>DBF (TBT)</b>	<b>WEP</b>	<b>NW / LFS</b>	<b>TKC</b>	<b>LC</b>	<b>TSW</b>	<b>MPST</b>	<b>ST</b>	<b>MPNR</b>	<b>Ramsar ponds</b>	<b>Ramsar intertidal areas</b>	<b>Ramsar Site</b>	<b>DEEP BAY AREA</b>	<b>Starling Inlet</b>
<b>Species</b>																					
Osprey			6	2	1		1	1								0	1		1	11	
Black Kite	3	3	2	2				5			2	2	2	1	7	22	11	2	35	51	
White-bellied Sea Eag																0			0	0	
Eastern Marsh Harrier	1			2												2			2	5	
Common Buzzard	1		1											2		2	3		5	6	
Greater Spotted Eagle	1	0						0			0	0	0	0	0	2	0	0	2	3	
Imperial Eagle	1	0						0			0	0	0	0	1	3	0	0	3	5	
Peregrine Falcon				1												1			1	2	
Pied Kingfisher	0	1	2			1		0			0	1	0	2	3	1	3	1	5	11	
Common Kingfisher	4	6	3	1				2	2		6	2	3	3	8	6	18	1	25	46	2
White-throated Kingfisher	2	2	11	2		2	1	2	2		0	0	3	0	2	3	6	5	14	32	
Black-capped Kingfisher	1	0		1				0			0	0	0	0	0	0	0	1	1	2	
Red-billed Starling	0	42	30				20	0			355	251	300	69	107	400	970	20	1390	1574	8
Collared Crow	1	0	5			1		0			0	9	2	0	0	4	11	1	16	22	
Japanese Sparrowhawk																1			1	1	
Common Kestrel																	1		1	2	

Summary of Waterbird Count, December 2009

SPECIES	SRA	SRB	DBA	DBB	DBC	DBD	DBE	DBF (TBT)	WEP	NW / LFS	TKC	LC	TSW	MPST	ST	MPNR	Ramsar ponds	Ramsar intertidal areas	Ramsar Site	DEEP BAY AREA	Starling Inlet
Little Grebe	32	11	18				11	25	3	4	32	0	20	2	4	35	56	11	102	197	9
Great Crested Grebe			10			65				51						0		65	65	126	
Black-necked Grebe					1											0		1	1	1	
Great Cormorant	306	147	26	258	2		66	88	79	2	54	93	91	88	39	5246	367	327	5940	6585	7
Dalmatian Pelican				1												0		1	1	1	
Grey Heron	192	37	78	10	5	12	26	15	94	11	8	25	10	3	5	273	54	53	380	804	36
Purple Heron																0			0	0	
Great Egret	214	25	30	79	5	6	8	22	25	72	19	9	213	35	33	87	270	101	458	882	129
Intermediate Egret	10	1	1	8				0		1	0	0	0	0	0	2	0	8	10	23	1
Little Egret	88	60	47	48	34	35	3	20	12	46	103	9	231	246	27	38	585	125	748	1047	25
Swinhoe's Egret																0			0	0	
Pacific Reef Egret																0			0	0	
Cattle Egret	0	8						0			2	6	3	11	1	0	21	0	21	31	
Chinese Pond Heron	15	14	17	7		4	9	5		8	37	4	5	2	37	9	51	20	80	173	2
Striated Heron	0	0						0			0	0	0	0	0	0	0	0	0	0	
B-c Night Heron	0	0						0			0	0	0	0	0	4	0	0	4	4	16
Yellow Bittern	0	0						0			0	0	0	0	0	0	0	0	0	0	
Cinnamon Bittern																0			0	0	
Great Bittern																0			0	0	
Black Stork																0			0	0	
Black-headed Ibis																0			0	0	
Eurasian Spoonbill	4															0			0	4	
Black-faced Spoonbill	71		5				9	3	63		27		3			204	30	9	243	385	
Common Shelduck					4											0		4	4	4	
Eurasian Wigeon	11	19	994			1847	7	0	25	730	0	0	0	0	0	147	0	1854	2001	3780	
Falcated Duck																0			0	0	
Gadwall																0			0	0	
Baikal Teal																0			0	0	
Common Teal	60	12	536					0	10		0	0	0	0	0	0	0	0	0	618	13
Mallard																0			0	0	
Spot-billed Duck																0			0	0	
Chinese Spotbill	2															0			0	2	
Burmese Spotbill																0			0	0	
Northern Pintail	16	2			1200	224	103		53							412		1527	1939	2010	
Garganey		1							25							2			2	28	
Northern Shoveler	1	2	500		35	127	565									82		727	809	1312	
Common Pochard																0			0	0	
Baer's Pochard																0			0	0	
Tufted Duck	237		80		40		65									168		105	273	590	
Greater Scaup										40						0			0	40	
Red-breasted Merganser																0			0	0	
Duck sp.				2290												0		2290	2290	2290	
Slaty-breasted Rail																0			0	0	
Water Rail																0			0	0	
White-breasted Waterhen	0	1		2			1	0	2		0	0	0	0	0	0	0	3	3	6	1
Watercock																0			0	0	
Common Moorhen	5	13	29				2	5	4		2	0	0	0	2	49	4	2	55	111	23
Eurasian Coot	3															2			2	5	1

Pheasant-tailed Jacana																		0		0	<b>0</b>		
Greater Painted Snipe																		0		0	<b>0</b>		
Black-winged Stilt			1															0		0	<b>1</b>		
Pied Avocet			9200			290	55			3		10					0	10	345	355	<b>9558</b>		
Oriental Pratincole																		0		0	<b>0</b>		
Northern Lapwing																		0		0	<b>0</b>		
Grey-headed Lapwing																		0		0	<b>0</b>		
Pacific Golden Plover																		0		0	<b>0</b>		
Grey Plover						3						23						0		3	3	<b>26</b>	
Common Ringed Plover																		0		0	<b>0</b>		
Little Ringed Plover	7	3	8	54				6	3	27	14	13	0	4	3	0	31	54	85	<b>142</b>			
Kentish Plover			1	1687						78								0		1687	1687	<b>1766</b>	2
Lesser Sand Plover																		0		0	<b>0</b>		
Greater Sand Plover																		0		0	<b>0</b>		
Black-tailed Godwit																		0		0	<b>0</b>		
Bar-tailed Godwit																		0		0	<b>0</b>		
Whimbrel												34						0		0	<b>34</b>		
Eurasian Curlew			69	277	6	14	13			9								0		310	310	<b>388</b>	
Far Eastern Curlew																		0		0	<b>0</b>		
Spotted Redshank							5											0		5	5	<b>5</b>	
Common Redshank						22	2											0		24	24	<b>24</b>	
Marsh Sandpiper						10	61											0		71	71	<b>71</b>	
Common Greenshank	1		19			51	5			19	2				1	0	2	56	58	<b>98</b>		1	
Nordmann's Greenshank																		0		0	<b>0</b>		
Green Sandpiper	6	4						6	1	2	12	2	3	0	6	0	13	0	13	<b>42</b>			
Wood Sandpiper	7	3	39				2	0	7		12	0	0	0	11	0	9	2	11	<b>81</b>			
Terek Sandpiper																		0		0	<b>0</b>		
Common Sandpiper	9	8	30	1	2	1	1	0	8	4	6	4	2	1	15	0	14	5	19	<b>92</b>		1	
Grey-tailed Tattler																		0		0	<b>0</b>		
Ruddy Turnstone																		0		0	<b>0</b>		
Red-necked Phalarope																		0		0	<b>0</b>		
Pintail Snipe																		0		0	<b>0</b>		
Swinhoe's Snipe																		0		0	<b>0</b>		
Pintail/Swinhoe's Snipe																		0		0	<b>0</b>		
Common Snipe		4													2	0			0	6	<b>6</b>		
Long-billed Dowitcher																		0		0	<b>0</b>		
Asian Dowitcher																		0		0	<b>0</b>		
Red Knot																		0		0	<b>0</b>		
Great Knot																		0		0	<b>0</b>		
Sanderling																		0		0	<b>0</b>		
Red-necked Stint				3														0		3	3	<b>3</b>	
Little Stint																		0		0	<b>0</b>		
Temminck's Stint			2	6														0		6	6	<b>8</b>	
Long-toed Stint																		0		0	<b>0</b>		
Pectoral Sandpiper																		0		0	<b>0</b>		
Sharp-tailed Sandpiper																		0		0	<b>0</b>		
Dunlin				1036														0		1036	1036	<b>1036</b>	9
Curlew Sandpiper																		0		0	<b>0</b>		
Spoon-billed Sandpiper																		0		0	<b>0</b>		
Broad-billed Sandpiper				1														0		1	1	<b>1</b>	
Ruff																		0		0	<b>0</b>		
Small wader spp.																		0		0	<b>0</b>	8	
Wader sp.			700	1380	450		850											0		2680	2680	<b>3380</b>	
Black-tailed Gull																		0		0	<b>0</b>		





Summary of Waterbird Count, January 2010

SPECIES	SRA	SRB	DBA	DBB	DBC	DBD	DBE	DBF (TBT)	WEP	NW / LFS	TKC	LC	TSW	MPST	ST	MPNR	Ramsar ponds	Ramsar intertidal areas	Ramsar Site	DEEP BAY AREA	Starling Inlet
Little Grebe	34	29						51	2		30	0	10	5	15	36	80	0	116	212	4
Great Crested Grebe			40	55	12	68	6			25	2					0		141	141	208	
Black-necked Grebe					2													2	2	2	
Great Cormorant%	156*	280*	77*					232*	38*		22*	45*	3384	335*	143*	5661			5661	9045	270
Dalmatian Pelican																0			0	0	
Grey Heron	169	30	44	7	3	1	68	29	69	4	17	12	18	17	3	270	86	79	435	761	42
Purple Heron									1							0			0	1	
Great Egret	168	34	32	60	1	1	9	21		7	11	2	88	150	38	34	272	71	377	656	92
Intermediate Egret	4	0		10				0			0	0	0	0	0	3	3	10	16	17	
Little Egret	178	8	94	101		1		10	1	73	26	1	180	39	373	112	333	102	547	1197	24
Swinhoe's Egret																0			0	0	
Pacific Reef Egret																0			0	0	
Cattle Egret	6	0						0			0	13	7	0	2	0	20	0	20	28	3
Chinese Pond Heron	21	14	14					28		2	29	2	7	28	41	10	84	0	94	196	2
Striated Heron	0	0						0			0	0	0	0	0	0	0	0	0	0	
B-c Night Heron	0	0						0			2	0	0	0	0	0	2	0	2	2	
Yellow Bittern	0	0						0			0	0	0	0	0	0	0	0	0	0	
Cinnamon Bittern																0			0	0	
Great Bittern																0			0	0	
Black Stork																0			0	0	
Black-headed Ibis																0			0	0	
Eurasian Spoonbill																3			3	3	
Black-faced Spoonbill	22		14					20	17							423	31		454	496	
Common Shelduck																0		6	6	6	
Eurasian Wigeon	122	0	898	121	3	305	1	0	102	1000	0	0	0	0	0	264	0	430	694	2816	
Falcated Duck									1							0			0	1	
Gadwall																0			0	0	
Baikal Teal																0			0	0	
Common Teal	137	0	242	32			91	0	20		0	0	0	0	0	3	0	123	126	525	11
Mallard																2			2	2	
Spot-billed Duck																4			4	4	
Chinese Spotbill	3															0			0	3	
Burmese Spotbill																0			0	0	
Northern Pintail	11		40	880	150		200		7							324		1150	1474	1612	
Garganey	1			2					54							3		2	5	60	
Northern Shoveler	4		7657	3913	3											218		3916	4134	11795	
Common Pochard																2			2	2	
Baer's Pochard																0			0	0	
Tufted Duck	56		477		2135			69			1					388		2135	2523	3126	
Greater Scaup					4											0			0	4	
Red-breasted Merganser																0			0	0	
Duck sp.			2200	1980	800		200									12		2980	2992	5192	
Slaty-breasted Rail																0			0	0	
Water Rail																0			0	0	
White-breasted Waterhen	0	0		3		1		0	2	2	1	1	1	1	1	2	3	4	9	15	1
Watercock																0			0	0	
Common Moorhen	11	14	15					6	27		4	0	0	2	4	71	9	0	80	154	20
Eurasian Coot	6		88													5			5	99	1
Pheasant-tailed Jacana																0			0	0	



Heuglin's Gull#				700												0		700	700	700	
Yellow-legged Gull				8												0		8	8	8	
Slaty-backed Gull#				2												0		2	2	2	
Pallas's Gull																0			0	0	
Large Gull spp.																0			0	0	
Brown-headed Gull																0			0	0	
Black-headed Gull	0	0	4990					0		2	0	325	0	0	2	0	325	0	325	5319	
Saunders's Gull#				20												0		20	20	20	
Whiskered Tern																0			0	0	
White-winged Tern																0			0	0	
Gull-billed Tern																0			0	0	
Caspian Tern				2												0		2	2	2	
<b>Total</b>	<b>1030</b>	<b>175</b>	<b>26116</b>	<b>19941</b>	<b>3113</b>	<b>378</b>	<b>575</b>	<b>253</b>	<b>1298</b>	<b>1140</b>	<b>175</b>	<b>365</b>	<b>3741</b>	<b>261</b>	<b>525</b>	<b>8645</b>	<b>1353</b>	<b>23923</b>	<b>33921</b>	<b>67731</b>	508
	<b>Deep Bay Area</b>	<b>%</b>	<b>Ramsar Site</b>	<b>%</b>	<b>SI</b>																
<b>Cormorants</b>	<b>9045</b>	<b>13.4</b>	<b>5661</b>	<b>16.7</b>	<b>270</b>	<b>0</b>															
<b>Ardeids etc</b>	<b>3357</b>	<b>5.0</b>	<b>1948</b>	<b>5.7</b>	<b>163</b>	<b>0</b>															
<b>Ducks, grebes, pelicans</b>	<b>25570</b>	<b>37.8</b>	<b>12221</b>	<b>36.0</b>	<b>15</b>	<b>0</b>															
<b>Rails, Coot etc</b>	<b>268</b>	<b>0.4</b>	<b>94</b>	<b>0.3</b>	<b>22</b>	<b>0</b>															
<b>Waders</b>	<b>23416</b>	<b>34.6</b>	<b>12916</b>	<b>38.1</b>	<b>38</b>	<b>0</b>															
<b>Gulls and terns</b>	<b>6075</b>	<b>9.0</b>	<b>1081</b>	<b>3.2</b>	<b>0</b>	<b>0</b>															
<b>TOTAL</b>	<b>67731</b>		<b>33921</b>		<b>508</b>	<b>0</b>															
Date of count: 24 Jan 2010																					
n/c = site not counted High tide measured at TBT:																					
# indicates count consists of or includes a count made up to one week either side of the count date																					
% = count made at evening roost																					
* indicates counts could be overlapped and excluded in the total numbers.																					
<b>Wetland-dependant species</b>																					
<b>Species</b>	<b>SRA</b>	<b>SRB</b>	<b>DBA</b>	<b>DBB</b>	<b>DBC</b>	<b>DBD</b>	<b>DBE</b>	<b>DBF (TBT)</b>	<b>WEP</b>	<b>NW / LFS</b>	<b>TKC</b>	<b>LC</b>	<b>TSW</b>	<b>MPST</b>	<b>ST</b>	<b>MPNR</b>	<b>Ramsar ponds</b>	<b>Ramsar intertidal areas</b>	<b>Ramsar Site</b>	<b>DEEP BAY AREA</b>	<b>Starling Inlet</b>
Osprey			5	6												4			4	15	1
Black Kite	1	1	4					5	1		0	0	3	2	4	5	10	0	15	26	
White-bellied Sea Eag																1			1	1	
Eastern Marsh Harrier			3	1												4			4	8	
Common Buzzard	1										1			1		8	2		10	11	
Greater Spotted Eagle	1	0						0			0	0	0	1	1	3	1	0	4	6	
Imperial Eagle	1	0						0			0	0	0	0	0	5	0	0	5	6	
Peregrine Falcon	1			1												3			3	5	
Pied Kingfisher	1	1	4			2		0			1	0	0	1	1	0	2	2	4	11	2
Common Kingfisher	1	1	1					2	2		5	1	2	3	5	3	12	0	15	26	6
White-throated Kingfisher	1	0	3			1		1	1		4	1	0	2	1	9	7	1	17	24	3
Black-capped Kingfisher	0	0	2					0			0	0	0	0	0	0	0	0	0	2	1
Red-billed Starling	99	12	74					0			5	15	12	200	180	994	223	0	1217	1591	
Collared Crow	1	0	1					2	1		2	4	0	1	2	24	10	0	34	38	3

Summary of Waterbird Count, February 2010

SPECIES	SRA	SRB	DBA	DBB	DBC	DBD	DBE	DBF (TBT)	WEP	NW/LFS	TKC	LC	TSW	MPST	ST	MPNR	Ramsar ponds	Ramsar intertidal areas	Ramsar Site	DEEP BAY AREA	Starling Inlet
Little Grebe	15	20	20					39	3		32	0	16	2	10	51	54	0	105	208	7
Great Crested Grebe			44	7	4	94				8						0		105	105	157	
Great Cormorant	97	103	5627					156	66		26	20	3	291	63	4306	384	0	4690	10758	18
Dalmatian Pelican																0			0	0	
Grey Heron	142	19	70	8		3	63	36	111	3	1	13	6	4	2	337	52	74	463	818	24
Purple Heron																0			0	0	
Great Egret	26	19	54	24		10		62	18	15	6	5	11	234	41	75	310	34	419	600	132
Intermediate Egret	1	0		7				0			0	0	0	2	0	1	2	7	10	11	
Little Egret	30	35	104	43		31		175	4	37	45	8	25	182	34	97	402	74	573	850	22
Swinhoe's Egret																0			0	0	
Pacific Reef Egret																0			0	0	
Cattle Egret	9	0						0			0	14	2	0	0	0	16	0	16	25	
Chinese Pond Heron	14	13	7	4			3	10		4	8	6	1	18	16	20	41	7	68	124	
Striated Heron	0	0						0			0	0	0	0	0	0	0	0	0	0	
B-c Night Heron	0	0						0			0	0	0	0	0	13	0	0	13	13	
Yellow Bittern	0	0						0			0	0	0	0	0	0	0	0	0	0	
Cinnamon Bittern																0			0	0	
Great Bittern																0			0	0	
Black Stork																0			0	0	
Black-headed Ibis																0			0	0	
Eurasian Spoonbill																2			2	2	
Black-faced Spoonbill	16		32	8	4			18	71		10	2		20	2	166	49	12	227	349	
Common Shelduck				5												0		5	5	5	
Eurasian Wigeon	0	0	282	352	38	13	2	0	11	68	0	0	0	0	0	321	0	405	726	1087	
Falcatid Duck								1								0		1	1	1	
Gadwall																4			4	4	
Baikal Teal																0			0	0	
Common Teal	9	0	20	63			10	0	28		0	0	0	0	0	0	0	73	73	130	22
Mallard																0			0	0	
Spot-billed Duck																0			0	0	
Chinese Spotbill	2															0			0	2	
Burmese Spotbill																0			0	0	
Northern Pintail			20	2274				36	18							154		2310	2464	2502	
Garganey				14				4	12							0		18	18	30	
Northern Shoveler			1748	3741	70			1								589		3812	4401	6149	
Common Pochard																0			0	0	
Baer's Pochard																0			0	0	
Tufted Duck	1	7	343		3000	850		27								643		3850	4493	4871	
Greater Scaup																1			1	1	
Red-breasted Merganser																0			0	0	
Duck sp.			4910	500												0		500	500	5410	
Slaty-breasted Rail				1												0		1	1	1	
Water Rail																0			0	0	
White-breasted Waterhen	1	5	3	3				4		1	1	1	3	0	0	1	6	3	10	23	
Watercock																0			0	0	
Common Moorhen	7	10	10	1			1	4	19		1	0	0	2	2	19	2	2	23	76	26
Eurasian Coot	7		1			210										5		210	215	223	1
Pheasant-tailed Jacana																0			0	0	
Greater Painted Snipe																0			0	0	

Black-winged Stilt			53														0		0	75	
Pied Avocet			2002	11878				2									1	11878	11879	13883	
Oriental Pratincole																	0		0	0	
Northern Lapwing																	0		0	0	
Grey-headed Lapwing																	0		0	0	
Pacific Golden Plover																	0		0	0	
Grey Plover				120													0	120	120	120	
Common Ringed Plover				1													0		1	1	1
Little Ringed Plover	5	2	2	11				3	17	12	12	0	0	5	2	9	17	11	37	80	
Kentish Plover			1495	1026*													0		0	1495	
Lesser Sand Plover				2													0	2	2	2	
Greater Sand Plover																	0		0	0	
Black-tailed Godwit				722													0	722	722	722	
Bar-tailed Godwit				1													0	1	1	1	
Whimbrel									6								0		0	6	
Eurasian Curlew				1044					1								0	1044	1044	1045	
Far Eastern Curlew																	0		0	0	
Spotted Redshank				15					169								2	15	17	186	
Common Redshank			95	10					8				1			0	1	10	11	114	
Marsh Sandpiper				1660					50								0	1660	1660	1710	
Common Greenshank			207	281					68	40							550	281	831	1146	1
Nordmann's Greenshank				1													0	1	1	1	
Green Sandpiper	4	8						4	3	2	10	3	3	2	3	0	22	0	22	42	
Wood Sandpiper	0	19	62	1				0	4		6	0	0	12	3	0	17	1	18	107	
Terek Sandpiper																	0		0	0	
Common Sandpiper	2	9	6			1		2	3	8	8	3	6	5	9	1	20	1	22	63	
Grey-tailed Tattler																	0		0	0	
Ruddy Turnstone																	0		0	0	
Red-necked Phalarope																	0		0	0	
Pintail Snipe																	0		0	0	
Swinhoe's Snipe																	0		0	0	
Pintail/Swinhoe's Snipe													1			0	1		1	1	
Common Snipe		4	2						1							0		0	7		
Long-billed Dowitcher				1													0	1	1	1	
Asian Dowitcher																	0		0	0	
Red Knot				3													0	3	3	3	
Great Knot				11													0	11	11	11	
Sanderling																	0		0	0	
Red-necked Stint			16														0		0	16	
Little Stint																	0		0	0	
Temminck's Stint									3								16		16	19	
Long-toed Stint																	0		0	0	
Pectoral Sandpiper																	0		0	0	
Sharp-tailed Sandpiper																	0		0	0	
Dunlin				482													0	482	482	482	
Curlew Sandpiper																	0		0	0	
Spoon-billed Sandpiper																	0		0	0	
Broad-billed Sandpiper									1								0		0	1	
Ruff																	0		0	0	
Small wader spp.																	0		0	0	
Wader sp.																	0		0	0	
Black-tailed Gull				5													0	5	5	5	
Heuglin's Gull				121													0	121	121	121	
Yellow-legged Gull				3													0	3	3	3	

Slaty-backed Gull				2												0		2	2	2	
Pallas's Gull																0			0	0	
Large Gull spp.																0			0	0	
Brown-headed Gull																0			0	0	
Relict Gull				1												0		1	0	1	
Black-headed Gull	0	0	1593	533	3	5				1	295	214	1	1	1550	515	536	2601	4196		
Saunders's Gull				74											0		74	74	74		
Whiskered Tern		1													0			0	1		
White-winged Tern															0			0	0		
Gull-billed Tern															0			0	0		
Caspian Tern				2											0		2	2	2		
<b>Total</b>	<b>388</b>	<b>274</b>	<b>18828</b>	<b>24040</b>	<b>3116</b>	<b>1215</b>	<b>121</b>	<b>545</b>	<b>712</b>	<b>205</b>	<b>167</b>	<b>370</b>	<b>290</b>	<b>782</b>	<b>188</b>	<b>8934</b>	<b>1911</b>	<b>28492</b>	<b>39336</b>	<b>60175</b>	253
	<b>Deep Bay Area</b>	<b>%</b>	<b>Ramsar Site</b>	<b>%</b>	<b>SI</b>																
<b>Cormorants</b>	<b>10758</b>	<b>17.9</b>	<b>4690</b>	<b>11.9</b>	<b>18</b>	<b>0</b>															
<b>Ardeids etc</b>	<b>2792</b>	<b>4.6</b>	<b>1791</b>	<b>4.6</b>	<b>178</b>	<b>0</b>															
<b>Ducks, grebes, pelicans</b>	<b>20557</b>	<b>34.2</b>	<b>12896</b>	<b>32.8</b>	<b>29</b>	<b>0</b>															
<b>Rails, Coot etc</b>	<b>323</b>	<b>0.5</b>	<b>249</b>	<b>0.6</b>	<b>27</b>	<b>0</b>															
<b>Waders</b>	<b>21340</b>	<b>35.5</b>	<b>16902</b>	<b>43.0</b>	<b>1</b>	<b>0</b>															
<b>Gulls and terns</b>	<b>4405</b>	<b>7.3</b>	<b>2808</b>	<b>7.1</b>	<b>0</b>	<b>0</b>															
<b>TOTAL</b>	<b>60175</b>		<b>39336</b>		<b>253</b>	<b>0</b>															
Date of count: 21 Feb 2010																					
n/c = site not counted																					
High tide measured at TBT:																					
# indicates count consists of or includes a count made up to one week either side of the count date																					
% = count made at evening roost																					
* indicates counts could be involving same individuals in other areas and so not included in the total.																					
<b>Wetland-dependant species</b>																					
<b>Species</b>	<b>SRA</b>	<b>SRB</b>	<b>DBA</b>	<b>DBB</b>	<b>DBC</b>	<b>DBD</b>	<b>DBE</b>	<b>DBF (TBT)</b>	<b>WEP</b>	<b>NW/LFS</b>	<b>TKC</b>	<b>LC</b>	<b>TSW</b>	<b>MPST</b>	<b>ST</b>	<b>MPNR</b>	<b>Ramsar ponds</b>	<b>Ramsar intertidal areas</b>	<b>Ramsar Site</b>	<b>DEEP BAY AREA</b>	<b>Starling Inlet</b>
Osprey			3	2		1			1							1			1	8	
Black Kite	7	1	12	1				18	2		5	8	7	3	5	11	41	1	53	80	
White-bellied Sea Eag																0			0	0	
Eastern Marsh Harrier																1			1	1	
Common Buzzard								1	1		2		2	1		3	6		9	10	
Greater Spotted Eagle	0	0						0			0	0	0	0	0	1	0	0	1	1	
Imperial Eagle	1	0						0			0	0	0	0	1	2	0	0	2	4	
Peregrine Falcon																0			0	0	
Pied Kingfisher	0	0	2					0			0	0	0	0	1	2	0	0	2	5	1
Common Kingfisher	1	3						0	4		14	2	2	2	1	3	19	0	22	32	3
White-throated Kingfisher	0	1	2				1	4			0	0	1	1	0	2	6	1	9	12	1
Black-capped Kingfisher	0	0	1				1	0			0	0	1	0	0	0	1	1	2	3	2
Red-billed Starling	88	1						0			6	415	62	131	82	50	564	0	614	835	10
Collared Crow	0	0	1					1	1		2	2	7	0	1	11	5	0	16	26	2

Summary of Waterbird Count, March 2010

SPECIES	SRA	SRB	DBA	DBB	DBC	DBD	DBE	DBF (TBT)	NW / LFS	WEP	TKC	LC	TSW	MPST	ST	MPNR	Ramsar ponds	Ramsar intertidal areas	Ramsar Site	DEEP BAY AREA	Starling Inlet
Little Grebe	31	20						21		4	29	0	12	5	4	150	44	0	194	276	8
Great Crested Grebe			60	1	5	2	16									0		24	24	84	
Great Cormorant	88	86	700	10				169		27	39	38	21	142	80	3429	322	10	3761	4829	28
Dalmatian Pelican																0			0	0	
Grey Heron	26	1	8	32	1	4	51	12	3	82	8	11	3	2	0	172	33	88	293	416	6
Purple Heron																2			2	2	
Great Egret	80	55	7	54	14	1	16	24	4	4	6	4	11	10	18	13	45	85	143	321	203
Intermediate Egret	5	0	1	12				2			0	0	0	0	0	9	2	12	23	29	1
Little Egret	84	21	54	78		2	23	62	22	3	66	12	93	12	72	128	195	103	426	732	32
Swinhoe's Egret																0			0	0	
Pacific Reef Egret																0			0	0	
Cattle Egret	0	0						0			1	14	0	5	27	0	20	0	20	47	
Chinese Pond Heron	15	9	4	1				1	1		21	1	2	10	22	10	29	1	40	97	
Striated Heron	0	0						0			0	0	0	0	0	0	0	0	0	0	
B-c Night Heron	1	0	16					0			1	0	0	0	0	1	1	0	2	19	
Yellow Bittern	0	0						0			0	0	0	0	0	0	0	0	0	0	
Cinnamon Bittern																0			0	0	
Great Bittern	2															0			0	2	
Black Stork																0			0	0	
Black-headed Ibis																0			0	0	
Eurasian Spoonbill	2															5			5	7	
Black-faced Spoonbill	10		14	2	6	2	43	4		42		5	6	3	2	152	18	53	223	291	
Common Shelduck																17			17	17	
Eurasian Wigeon	95	0	33	323		1	41	0		20	0	0	0	0	0	94	0	365	459	607	
Falcated Duck																0			0	0	
Gadwall																0			0	0	
Baikal Teal																0			0	0	
Common Teal	9	0	90	129				0		8	0	0	0	0	0	25	0	129	154	261	21
Mallard																0			0	0	
Philippine Duck																1			1	1	
Spot-billed Duck																1			1	1	
Chinese Spotbill																0			0	0	
Burmese Spotbill																0			0	0	
Northern Pintail	3			5												1		5	6	9	
Garganey				162						42						0		162	162	204	
Northern Shoveler			1212	1252		1	28									290		1281	1571	2783	
Common Pochard																2			2	2	
Baer's Pochard																0			0	0	
Tufted Duck	7	12	53				8	6		1						702		8	710	789	
Greater Scaup																0			0	0	
Red-breasted Merganser																0			0	0	
Duck sp.							90									0		90	90	90	
Slaty-breasted Rail																0			0	0	
Water Rail																0			0	0	
White-breasted Waterhen	0	1	2					3			2	0	0	1	2	5	3	0	8	16	
Watercock																0			0	0	
Common Moorhen	17	8	22	3			1	6		6	18	0	0	1	8	32	22	4	58	122	20
Eurasian Coot	6					13				1						2		13	15	22	
Pheasant-tailed Jacana																0			0	0	



Greater Painted Snipe																	0			0	<b>1</b>	
Black-winged Stilt	4		842	9													10		9	19	<b>870</b>	
Pied Avocet			125	6120													2		6120	6120	<b>6247</b>	
Oriental Pratincole																				0	<b>0</b>	
Northern Lapwing																				0	<b>0</b>	
Grey-headed Lapwing			2																	0	<b>2</b>	
Pacific Golden Plover																				0	<b>0</b>	
Grey Plover				482															482	482	<b>482</b>	
Common Ringed Plover																				0	<b>0</b>	
Little Ringed Plover	21	0	92				46	6	17	2	4	0	12	0	65	0			65	0	<b>200</b>	
Kentish Plover			1200																	0	<b>1200</b>	
Lesser Sand Plover																				0	<b>0</b>	
Greater Sand Plover																				0	<b>0</b>	
Black-tailed Godwit			938	543															543	543	<b>1481</b>	
Bar-tailed Godwit				1															1	1	<b>1</b>	
Whimbrel				1															1	1	<b>1</b>	
Eurasian Curlew				512															512	512	<b>512</b>	
Far Eastern Curlew				1															1	1	<b>1</b>	
Spotted Redshank				51				34									24		51	75	<b>109</b>	
Common Redshank			980	4				6					1		25	1		4	30		<b>1016</b>	
Marsh Sandpiper			800	1170				75							140			1170	1310		<b>2185</b>	
Common Greenshank			250	320				1245							161			320	481		<b>1976</b>	
Nordmann's Greenshank				1														1	1		<b>1</b>	
Green Sandpiper	2	4					2	1	5	2	3	0	2	0	11	0		11			<b>21</b>	
Wood Sandpiper	1	12	222				0	12	4	0	0	3	2	2	6	0		8			<b>258</b>	
Terek Sandpiper																				0	<b>0</b>	
Common Sandpiper	10	6	12				1	1	8	2	14	8	8	5	8	5	39	2	46		<b>88</b>	1
Grey-tailed Tattler																				0	<b>0</b>	
Ruddy Turnstone																				0	<b>0</b>	
Red-necked Phalarope																				0	<b>0</b>	
Pintail Snipe																				0	<b>0</b>	
Swinhoe's Snipe																				0	<b>0</b>	
Pintail/Swinhoe's Snipe																				0	<b>0</b>	
Common Snipe	6		5					1					1	0						0	<b>13</b>	
Long-billed Dowitcher			1					1												0	<b>2</b>	
Asian Dowitcher																				0	<b>0</b>	
Red Knot				6														6	6		<b>6</b>	
Great Knot				33														33	33		<b>33</b>	
Sanderling																				0	<b>0</b>	
Red-necked Stint			150																	0	<b>150</b>	
Little Stint																				0	<b>0</b>	
Temminck's Stint			5				12	3									12		12		<b>20</b>	
Long-toed Stint																				0	<b>0</b>	
Pectoral Sandpiper																				0	<b>0</b>	
Sharp-tailed Sandpiper																				0	<b>0</b>	
Dunlin			10																	0	<b>10</b>	
Curlew Sandpiper			1	37				23										37	37		<b>61</b>	
Spoon-billed Sandpiper																				0	<b>0</b>	
Broad-billed Sandpiper																				0	<b>0</b>	
Ruff																				0	<b>0</b>	
Small wader spp.																				0	<b>0</b>	
Wader sp.																				0	<b>0</b>	
Black-tailed Gull				8														8	8		<b>8</b>	
Common Gull				1														1	1		<b>1</b>	
Heuglin's Gull				173														173	173		<b>173</b>	

Yellow-legged Gull				1												1		1	2	2	
Slaty-backed Gull				1												0		1	1	1	
Pallas's Gull																0			0	0	
Large Gull spp.				2												0		2	2	2	
Brown-headed Gull																0			0	0	
Relict Gull				1												0		1	1	1	
Black-headed Gull	0	0	1800	1636		30	40	0			0	237	2	0	0	0	239	1706	1945	3745	
Saunders's Gull				17												0		17	17	17	
Whiskered Tern				1												0		1	1	1	
White-winged Tern																0			0	0	
Gull-billed Tern																0			0	0	
Caspian Tern				2												0		2	2	2	
<b>Total</b>	<b>525</b>	<b>235</b>	<b>9711</b>	<b>13198</b>	<b>26</b>	<b>57</b>	<b>358</b>	<b>378</b>	<b>30</b>	<b>1657</b>	<b>231</b>	<b>334</b>	<b>165</b>	<b>200</b>	<b>260</b>	<b>5611</b>	<b>1107</b>	<b>13639</b>	<b>20357</b>	<b>32976</b>	<b>320</b>
	<b>Deep Bay Area</b>	<b>%</b>	<b>Ramsar Site</b>	<b>%</b>	<b>SI</b>																
<b>Cormorants</b>	<b>4829</b>	<b>14.6</b>	<b>3761</b>	<b>18.5</b>	<b>28</b>	<b>0</b>															
<b>Ardeids etc</b>	<b>1963</b>	<b>6.0</b>	<b>1177</b>	<b>5.8</b>	<b>242</b>	<b>0</b>															
<b>Ducks, grebes, pelicans</b>	<b>5124</b>	<b>15.5</b>	<b>3391</b>	<b>16.7</b>	<b>29</b>	<b>0</b>															
<b>Rails, Coot etc</b>	<b>160</b>	<b>0.5</b>	<b>81</b>	<b>0.4</b>	<b>20</b>	<b>0</b>															
<b>Waders</b>	<b>16947</b>	<b>51.4</b>	<b>9794</b>	<b>48.1</b>	<b>1</b>	<b>0</b>															
<b>Gulls and terns</b>	<b>3953</b>	<b>12.0</b>	<b>2153</b>	<b>10.6</b>	<b>0</b>	<b>0</b>															
<b>TOTAL</b>	<b>32976</b>		<b>20357</b>		<b>320</b>	<b>0</b>															
Date of count: 7 March 2010																					
n/c = site not counted																					
High tide measured at TBT:																					
# indicates count consists of or includes a count made up to one week either side of the count date																					
% = count made at evening roost																					
<b>Wetland-dependant species</b>																					
<b>Species</b>	<b>SRA</b>	<b>SRB</b>	<b>DBA</b>	<b>DBB</b>	<b>DBC</b>	<b>DBD</b>	<b>DBE</b>	<b>DBF (TBT)</b>	<b>NW / LFS</b>	<b>WEP</b>	<b>TKC</b>	<b>LC</b>	<b>TSW</b>	<b>MPST</b>	<b>ST</b>	<b>MPNR</b>	<b>Ramsar ponds</b>	<b>Ramsar intertidal areas</b>	<b>Ramsar Site</b>	<b>DEEP BAY AREA</b>	<b>Starling Inlet</b>
Osprey			2	5			1						1			1	1		2	10	1
Black Kite	0	0		1			1	2		1	1	0	1	1	0	3	4	2	9	11	1
White-bellied Sea Eag																0			0	0	
Eastern Marsh Harrier				1												0			0	1	
Common Buzzard	1		1					1					1			3	2		5	7	
Greater Spotted Eagle	0	0						0			0	0	0	0	0	1	0	0	1	1	
Imperial Eagle	0	0		2				0			0	1	0	0	0	3	1	2	6	6	
Peregrine Falcon				1												0			0	1	
Pied Kingfisher	1	0	2					3			1	0	1	0	1	0	4	0	4	9	
Common Kingfisher	1	1						3		1	9	0	0	1	4	4	10	0	14	24	1
White-throated Kingfisher	1	1	4				1	1		1	1	0	1	0	1	6	3	1	10	18	1
Black-capped Kingfisher	0	0						0			0	0	0	0	0	1	0	0	1	1	
Red-billed Starling	35	15	20					0		3	40	0	0	1	1	125	41	0	166	240	1
Collared Crow	1	1	2	1				3			0	8	0	0	0	11	11	1	23	27	1

---

## Winter 2009-10 Report on Waterbird Monitoring at the Mai Po Inner Deep Bay Ramsar Site

### *Appendix 2*



The Hong Kong Bird Watching Society Limited



Agriculture, Fisheries and Conservation Department

Peak counts of each waterbird species, mid-winter period (December to February) 2009-10.

#### Cormorants

Great Cormorants	10,758
------------------	--------

#### Ardeids and Ciconiiformes

Grey Heron	818
Purple Heron	1
Great Egret	882
Intermediate Egret	23
Little Egret	1,197
Swinhoe's Egret	0
Pacific Reef Egret	0
Cattle Egret	31
Chinese Pond Heron	196
Striated Heron	0
Black-crowned Night Heron	13
Yellow Bittern	0
Cinnamon Bittern	0
Great Bittern	0
Black Stork	0
Black-headed Ibis	0
Eurasian Spoonbill	4
Black-faced Spoonbill	496
Sub-total:	3,661

#### Ducks, Grebes and Pelicans

Little Grebe	212
Great Crested Grebe	215
Black-necked Grebe	2
Dalmatian Pelican	1
Common Shelduck	6
Eurasian Wigeon	3,780
Falcated Duck	1
Gadwall	4
Baikal Teal	0
Common Teal	627
Mallard	2
'Unassigned' Spotbill	4
Chinese Spotbill	3
Burmese Spotbill	0
Northern Pintail	2,502
Garganey	60
Northern Shoveler	20,008
Common Pochard	2
Baer's Pochard	0
Tufted Duck	4,871
Greater Scaup	40
Red-breasted Merganser	0
Sub-total:	32,340

#### Rails and Coots

Slaty-breasted Rail	1
Water Rail	0
White-breasted Waterhen	23
Watercock	0
Common Moorhen	154
Eurasian Coot	354
Sub-total:	532

## Shorebirds

Pheasant-tailed Jacana	0
Greater Painted Snipe	2
Black-winged Stilt	375
Pied Avocet	13,883
Oriental Pratincole	0
Northern Lapwing	0
Grey-headed Lapwing	0
Pacific Golden Plover	0
Grey Plover	637
Common Ringed Plover	1
Little Ringed Plover	192
Kentish Plover	4,303
Lesser Sand Plover	2
Greater Sand Plover	13
Black-tailed Godwit	752
Bar-tailed Godwit	1
Whimbrel	34
Eurasian Curlew	1,075
Far Eastern Curlew	1
Spotted Redshank	186
Common Redshank	297
Marsh Sandpiper	1,710
Common Greenshank	1,146
Nordmann's Greenshank	1
Green Sandpiper	42
Wood Sandpiper	113
Terek Sandpiper	0
Common Sandpiper	105
Grey-tailed Tattler	0
Ruddy Turnstone	0
Red-necked Phalarope	0
Pintail Snipe	0
Swinhoe's Snipe	0
Pintail/Swinhoe's Snipe	2
Common Snipe	19
Long-billed Dowitcher	1
Asian Dowitcher	0
Red Knot	8
Great Knot	22
Sanderling	0
Red-necked Stint	100
Little Stint	0
Temminck's Stint	44
Long-toed Stint	10
Pectoral Sandpiper	0
Sharp-tailed Sandpiper	0
Dunlin	2,500
Curlew Sandpiper	0
Spoon-billed Sandpiper	0
Broad-billed Sandpiper	1
Ruff	0
Unidentified small-sized Shorebird	0
Unidentified <i>Tringa</i>	1,122
Sub-total:	28,700

## Gulls and Terns

Black-tailed Gull	22
Common Gull	2
Heuglin's Gull	700
Yellow-legged Gull	8
Slaty-backed Gull	2
Pallas's Gull	0
Unidentified large Gull	0
Relict Gull	1

Brown-headed Gull	1
Black-headed Gull	10,575
Saunders's Gull	74
Whiskered Tern	1
White-winged Tern	0
Gull-billed Tern	0
Caspian Tern	2
Sub-total:	11,388

Summary of sub-totals of different waterbird groups, December 2009 to February 2010.

Group	Sub-total
Cormorants	10,758
Ardeids	3,661
Ducks, Grebes and Pelicans	32,340
Rails and Coots	532
Shorebirds	28,700
Gulls and Terns	11,388
Total	87,379

---

## Winter 2009-10 Report on Waterbird Monitoring at the Mai Po Inner Deep Bay Ramsar Site

### *Appendix 3*



The Hong Kong Bird Watching Society Limited



Agriculture, Fisheries and Conservation Department

Summary of Waterbird Count during Low Tide, December 2009

SPECIES	SRA	SRB	DBA	DBB	DBC	DBD	DBE	DBF (TBT)	NW / LFS	TKC	LC	TSW	MPST	ST	MPNR	Ramsar ponds	Ramsar intertidal areas	Ramsar Site	DEEP BAY AREA	Starling Inlet
Little Grebe	0	0	14					0		0	0	0	0	0	0	0	0	0	14	
Great Crested Grebe															0			0	0	
Great Cormorant	0	0	36					0		0	0	0	0	0	0	0	0	0	36	
Dalmatian Pelican															0			0	0	
Grey Heron	0	0	74					0		0	0	0	0	0	0	0	0	0	74	
Purple Heron															0			0	0	
Great Egret	0	0	35					0		0	0	0	0	0	0	0	0	0	35	
Intermediate Egret	0	0	1					0		0	0	0	0	0	0	0	0	0	1	
Little Egret	0	0	88					0		0	0	0	0	0	0	0	0	0	88	
Swinhoe's Egret															0			0	0	
Pacific Reef Egret															0			0	0	
Cattle Egret	0	0						0		0	0	0	0	0	0	0	0	0	0	
Chinese Pond Heron	0	0	23					0		0	0	0	0	0	0	0	0	0	23	
Striated Heron	0	0						0		0	0	0	0	0	0	0	0	0	0	
B-c Night Heron	0	0	13					0		0	0	0	0	0	0	0	0	0	13	
Yellow Bittern	0	0						0		0	0	0	0	0	0	0	0	0	0	
Cinnamon Bittern															0			0	0	
Great Bittern															0			0	0	
Black Stork															0			0	0	
Black-headed Ibis															0			0	0	
Eurasian Spoonbill															0			0	0	
Black-faced Spoonbill			31												0			0	31	
Common Shelduck				6											0			0	6	
Eurasian Wigeon	0	0	187	750				0		0	0	0	0	0	0	0	750	750	937	
Falcated Duck															0			0	0	
Gadwall															0			0	0	
Baikal Teal															0			0	0	
Common Teal	0	0	27					0		0	0	0	0	0	0	0	0	0	27	
Mallard			1												0			0	1	
Spot-billed Duck															0			0	0	
Chinese Spotbill															0			0	0	
Burmese Spotbill															0			0	0	
Northern Pintail			1												0			0	1	
Garganey															0			0	0	
Northern Shoveler															0			0	0	
Common Pochard															0			0	0	
Baer's Pochard															0			0	0	
Tufted Duck			1443												0			0	1443	
Greater Scaup															0			0	0	
Red-breasted Merganser															0			0	0	
Duck sp.			10171	320											0			0	10491	
Slaty-breasted Rail															0			0	0	
Water Rail															0			0	0	
White-breasted Waterhen	0	0	2					0		0	0	0	0	0	0	0	0	0	2	
Watercock															0			0	0	
Common Moorhen	0	0	26					0		0	0	0	0	0	0	0	0	0	26	



Eurasian Coot			40													0		0	40
Pheasant-tailed Jacana																0		0	0
Greater Painted Snipe																0		0	0
Black-winged Stilt			8													0		0	8
Pied Avocet			8260													0		0	8260
Oriental Pratincole																0		0	0
Northern Lapwing																0		0	0
Grey-headed Lapwing																0		0	0
Pacific Golden Plover																0		0	0
Grey Plover																0		0	0
Common Ringed Plover																0		0	0
Little Ringed Plover	0	0	33				0	0	0	0	0	0	0	0	0	0	0	0	33
Kentish Plover			4													0		0	4
Lesser Sand Plover																0		0	0
Greater Sand Plover																0		0	0
Black-tailed Godwit																0		0	0
Bar-tailed Godwit																0		0	0
Whimbrel																0		0	0
Eurasian Curlew			73													0		0	73
Far Eastern Curlew																0		0	0
Spotted Redshank																0		0	0
Common Redshank																0		0	0
Marsh Sandpiper																0		0	0
Common Greenshank																0		0	0
Nordmann's Greenshank																0		0	0
Green Sandpiper	0	0					0	0	0	0	0	0	0	0	0	0	0	0	0
Wood Sandpiper	0	0	49				0	0	0	0	0	0	0	0	0	0	0	0	49
Terek Sandpiper																0		0	0
Common Sandpiper	0	0	5				0	0	0	0	0	0	0	0	0	0	0	0	5
Grey-tailed Tattler																0		0	0
Ruddy Turnstone																0		0	0
Red-necked Phalarope																0		0	0
Pintail Snipe																0		0	0
Swinhoe's Snipe																0		0	0
Pintail/Swinhoe's Snipe																0		0	0
Common Snipe			1													0		0	1
Long-billed Dowitcher																0		0	0
Asian Dowitcher																0		0	0
Red Knot																0		0	0
Great Knot																0		0	0
Sanderling																0		0	0
Red-necked Stint																0		0	0
Little Stint																0		0	0
Temminck's Stint			5													0		0	5
Long-toed Stint																0		0	0
Pectoral Sandpiper																0		0	0
Sharp-tailed Sandpiper																0		0	0
Dunlin																0		0	0
Curlew Sandpiper																0		0	0
Spoon-billed Sandpiper																0		0	0
Broad-billed Sandpiper																0		0	0
Ruff																0		0	0
Small wader spp.																0		0	0

Wader sp.			370													0		0	370		
Black-tailed Gull																0		0	0		
Heuglin's Gull				75												0		0	75		
Yellow-legged Gull				3												0		0	3		
Slaty-backed Gull																0		0	0		
Pallas's Gull																0		0	0		
Large Gull spp.																0		0	0		
Brown-headed Gull																0		0	0		
Black-headed Gull	0	0	237	3250				0	0	0	0	0	0	0	0	0	0	3250	3250	3487	
Saunders's Gull																0		0	0		
Whiskered Tern																0		0	0		
White-winged Tern																0		0	0		
Gull-billed Tern																0		0	0		
Caspian Tern				2												0		0	2		
<b>Total</b>	<b>0</b>	<b>0</b>	<b>21258</b>	<b>4406</b>	<b>0</b>	<b>0</b>	<b>0</b>	<b>0</b>	<b>0</b>	<b>0</b>	<b>0</b>	<b>0</b>	<b>0</b>	<b>0</b>	<b>0</b>	<b>0</b>	<b>0</b>	<b>4000</b>	<b>4000</b>	<b>25664</b>	<b>0</b>
	<b>Deep Bay Area</b>	<b>%</b>	<b>Ramsar Site</b>	<b>%</b>	<b>SI</b>																
<b>Cormorants</b>	<b>36</b>	<b>0.1</b>	<b>0</b>	<b>0.0</b>	<b>0</b>	<b>0</b>															
<b>Ardeids etc</b>	<b>265</b>	<b>1.0</b>	<b>0</b>	<b>0.0</b>	<b>0</b>	<b>0</b>															
<b>Ducks, grebes, pelicans</b>	<b>12920</b>	<b>50.3</b>	<b>750</b>	<b>18.8</b>	<b>0</b>	<b>0</b>															
<b>Rails, Coot etc</b>	<b>68</b>	<b>0.3</b>	<b>0</b>	<b>0.0</b>	<b>0</b>	<b>0</b>															
<b>Waders</b>	<b>8808</b>	<b>34.3</b>	<b>0</b>	<b>0.0</b>	<b>0</b>	<b>0</b>															
<b>Gulls and terns</b>	<b>3567</b>	<b>13.9</b>	<b>3250</b>	<b>81.3</b>	<b>0</b>	<b>0</b>															
<b>TOTAL</b>	<b>25664</b>		<b>4000</b>		<b>0</b>	<b>0</b>															
Date of count: 20 Dec 2009 (low tide)																					
n/c = site not counted											High tide measured at TBT:										
# indicates count consists of or includes a count made up to one week either side of the count date																					
% = count made at evening roost																					
<b>Wetland-dependant species</b>																					
	<b>SRA</b>	<b>SRB</b>	<b>DBA</b>	<b>DBB</b>	<b>DBC</b>	<b>DBD</b>	<b>DBE</b>	<b>DBF (TBT)</b>	<b>NW / LFS</b>	<b>TKC</b>	<b>LC</b>	<b>TSW</b>	<b>MPST</b>	<b>ST</b>	<b>MPNR</b>	<b>Ramsar ponds</b>	<b>Ramsar intertidal areas</b>	<b>Ramsar Site</b>	<b>DEEP BAY AREA</b>	<b>Starling Inlet</b>	
<b>Species</b>																					
Osprey			2												0			0	2		
Black Kite	0	0	1					0		0	0	0	0	0	0	0	0	0	1		
White-bellied Sea Eag															0			0	0		
Eastern Marsh Harrier															0			0	0		
Common Buzzard															0			0	0		
Greater Spotted Eagle	0	0						0		0	0	0	0	0	0	0	0	0	0		
Imperial Eagle	0	0	1					0		0	0	0	0	0	0	0	0	0	1		
Peregrine Falcon															0			0	0		
Pied Kingfisher	0	0	3					0		0	0	0	0	0	0	0	0	0	3		
Common Kingfisher	0	0	3					0		0	0	0	0	0	0	0	0	0	3		
White-throated Kingfisher	0	0						0		0	0	0	0	0	0	0	0	0	0		
Black-capped Kingfisher	0	0	1					0		0	0	0	0	0	0	0	0	0	1		
Red-billed Starling	0	0	65					0		0	0	0	0	0	0	0	0	0	65		
Collared Crow	0	0	3					0		0	0	0	0	0	0	0	0	0	3		

Summary of Waterbird Count during Low Tide, January 2010

SPECIES	SRA	SRB	DBA	DBB	DBC	DBD	DBE	DBF (TBT)	NW / LFS	TKC	LC	TSW	MPST	ST	MPNR	Ramsar ponds	Ramsar intertidal areas	Ramsar Site	DEEP BAY AREA	Starling Inlet
Little Grebe	0	0	9					0		0	0	0	0	0	0	0	0	0	9	
Great Crested Grebe			61		154										0		154	154	215	
Black-necked Grebe			2																2	
Great Cormorant	0	0	3089					0		0	0	0	0	0	0	0	0	0	3089	
Dalmatian Pelican															0			0	0	
Grey Heron	0	0	95					0		0	0	0	0	0	0	0	0	0	95	
Purple Heron															0			0	0	
Great Egret	0	0	39					0		0	0	0	0	0	0	0	0	0	39	
Intermediate Egret	0	0						0		0	0	0	0	0	0	0	0	0	0	
Little Egret	0	0	122					0		0	0	0	0	0	0	0	0	0	122	
Swinhoe's Egret															0			0	0	
Pacific Reef Egret															0			0	0	
Cattle Egret	0	0						0		0	0	0	0	0	0	0	0	0	0	
Chinese Pond Heron	0	0	20					0		0	0	0	0	0	0	0	0	0	20	
Striated Heron	0	0						0		0	0	0	0	0	0	0	0	0	0	
B-c Night Heron	0	0						0		0	0	0	0	0	0	0	0	0	0	
Yellow Bittern	0	0						0		0	0	0	0	0	0	0	0	0	0	
Cinnamon Bittern															0			0	0	
Great Bittern															0			0	0	
Black Stork															0			0	0	
Black-headed Ibis															0			0	0	
Eurasian Spoonbill															0			0	0	
Black-faced Spoonbill			24												0			0	24	
Common Shelduck					4										0		4	4	4	
Eurasian Wigeon	0	0	1128		1670			0		0	0	0	0	0	0	0	1670	1670	2798	
Falcated Duck															0			0	0	
Gadwall															0			0	0	
Baikal Teal															0			0	0	
Common Teal	0	0	307		320			0		0	0	0	0	0	0	0	320	320	627	
Mallard															0			0	0	
Spot-billed Duck															0			0	0	
Chinese Spotbill															0			0	0	
Burmese Spotbill															0			0	0	
Northern Pintail			21		170										0		170	170	191	
Garganey															0			0	0	
Northern Shoveler			18943		1065										0		1065	1065	20008	
Common Pochard															0			0	0	
Baer's Pochard															0			0	0	
Tufted Duck			750												0			0	750	
Greater Scaup															0			0	0	
Red-breasted Merganser															0			0	0	
Duck sp.			2070												0			0	2070	
Slaty-breasted Rail															0			0	0	
Water Rail															0			0	0	
White-breasted Waterhen	0	0	4					0		0	0	0	0	0	0	0	0	0	4	
Watercock															0			0	0	

Common Moorhen	0	0	16					0		0	0	0	0	0	0	0	0	16
Eurasian Coot			354											0			0	354
Pheasant-tailed Jacana														0			0	0
Greater Painted Snipe														0			0	0
Black-winged Stilt			271											0			0	271
Pied Avocet			10860											0			0	10860
Oriental Pratincole														0			0	0
Northern Lapwing														0			0	0
Grey-headed Lapwing														0			0	0
Pacific Golden Plover														0			0	0
Grey Plover			40											0			0	40
Common Ringed Plover														0			0	0
Little Ringed Plover	0	0	6					0		0	0	0	0	0	0	0	0	6
Kentish Plover			55											0			0	55
Lesser Sand Plover														0			0	0
Greater Sand Plover														0			0	0
Black-tailed Godwit			250											0			0	250
Bar-tailed Godwit														0			0	0
Whimbrel														0			0	0
Eurasian Curlew			263											0			0	263
Far Eastern Curlew														0			0	0
Spotted Redshank			136											0			0	136
Common Redshank			230											0			0	230
Marsh Sandpiper			24											0			0	24
Common Greenshank			332											0			0	332
Nordmann's Greenshank														0			0	0
Green Sandpiper	0	0						0		0	0	0	0	0	0	0	0	0
Wood Sandpiper	0	0	5					0		0	0	0	0	0	0	0	0	5
Terek Sandpiper														0			0	0
Common Sandpiper	0	0	14					0		0	0	0	0	0	0	0	0	14
Grey-tailed Tattler														0			0	0
Ruddy Turnstone														0			0	0
Red-necked Phalarope														0			0	0
Pintail Snipe														0			0	0
Swinhoe's Snipe														0			0	0
Pintail/Swinhoe's Snipe														0			0	0
Common Snipe			3											0			0	3
Long-billed Dowitcher														0			0	0
Asian Dowitcher														0			0	0
Red Knot														0			0	0
Great Knot														0			0	0
Sanderling														0			0	0
Red-necked Stint														0			0	0
Little Stint														0			0	0
Temminck's Stint														0			0	0
Long-toed Stint														0			0	0
Pectoral Sandpiper														0			0	0
Sharp-tailed Sandpiper														0			0	0
Dunlin			10											0			0	10
Curlew Sandpiper														0			0	0
Spoon-billed Sandpiper														0			0	0

Broad-billed Sandpiper															0			0	0
Ruff															0			0	0
Small wader spp.															0			0	0
Wader sp.			530												0			0	530
Black-tailed Gull				12											0	12	12	12	12
Common Gull				1											0	1	1	1	1
Heuglin's Gull				145											0	145	145	145	145
Yellow-legged Gull				5											0	5	5	5	5
Slaty-backed Gull															0		0	0	0
Pallas's Gull															0		0	0	0
Large Gull spp.															0		0	0	0
Brown-headed Gull															0		0	0	0
Black-headed Gull	0	0	4575	6000			0	0	0	0	0	0	0	0	0	6000	6000	10575	10575
Saunders's Gull															0		0	0	0
Whiskered Tern															0		0	0	0
White-winged Tern															0		0	0	0
Gull-billed Tern															0		0	0	0
Caspian Tern															0		0	0	0
<b>Total</b>	<b>0</b>	<b>0</b>	<b>44658</b>	<b>0</b>	<b>9546</b>	<b>0</b>	<b>0</b>	<b>0</b>	<b>0</b>	<b>0</b>	<b>0</b>	<b>0</b>	<b>0</b>	<b>0</b>	<b>0</b>	<b>9546</b>	<b>9545</b>	<b>54204</b>	<b>0</b>

	Deep Bay Area	%	Ramsar Site	%	SI														
<b>Cormorants</b>	<b>3089</b>	<b>5.7</b>	<b>0</b>	<b>0.0</b>	<b>0</b>	<b>0</b>													
<b>Ardeids etc</b>	<b>300</b>	<b>0.6</b>	<b>0</b>	<b>0.0</b>	<b>0</b>	<b>0</b>													
<b>Ducks, grebes, pelicans</b>	<b>26674</b>	<b>49.2</b>	<b>3383</b>	<b>35.4</b>	<b>0</b>	<b>0</b>													
<b>Rails, Coot etc</b>	<b>374</b>	<b>0.7</b>	<b>0</b>	<b>0.0</b>	<b>0</b>	<b>0</b>													
<b>Waders</b>	<b>13029</b>	<b>24.0</b>	<b>0</b>	<b>0.0</b>	<b>0</b>	<b>0</b>													
<b>Gulls and terns</b>	<b>10738</b>	<b>19.8</b>	<b>6162</b>	<b>64.6</b>	<b>0</b>	<b>0</b>													
<b>TOTAL</b>	<b>54204</b>		<b>9545</b>		<b>0</b>	<b>0</b>													

Date of count: 24 Jan 2010  
n/c = site not counted High tide measured at TBT:  
# indicates count consists of or includes a count made up to one week either side of the count date  
% = count made at evening roost

<b>Wetland-dependant species</b>	SRA	SRB	DBA	DBB	DBC	DBD	DBE	DBF (TBT)	NW / LFS	TKC	LC	TSW	MPST	ST	MPNR	Ramsar ponds	Ramsar intertidal areas	Ramsar Site	DEEP BAY AREA	Starling Inlet
Osprey			3												0			0	3	
Black Kite	0	0	4					0		0	0	0	0	0	0	0	0	0	4	
White-bellied Sea Eag															0			0	0	
Eastern Marsh Harrier															0			0	0	
Common Buzzard			1												0			0	1	
Greater Spotted Eagle	0	0						0		0	0	0	0	0	0	0	0	0	0	
Imperial Eagle	0	0	1					0		0	0	0	0	0	0	0	0	0	1	
Peregrine Falcon															0			0	0	
Pied Kingfisher	0	0	3					0		0	0	0	0	0	0	0	0	0	3	
Common Kingfisher	0	0	5					0		0	0	0	0	0	0	0	0	0	5	
White-throated Kingfisher	0	0	7					0		0	0	0	0	0	0	0	0	0	7	
Black-capped Kingfisher	0	0	3					0		0	0	0	0	0	0	0	0	0	3	
Red-billed Starling	0	0	64					0		0	0	0	0	0	0	0	0	0	64	
Collared Crow	0	0	1					0		0	0	0	0	0	0	0	0	0	1	

Summary of Waterbird Count during Low Tide, February 2010

SPECIES	SRA	SRB	DBA	DBB	DBC	DBD	DBE	DBF (TBT)	NW/LFS	TKC	LC	TSW	MPST	ST	MPNR	Ramsar ponds	Ramsar intertidal areas	Ramsar Site	DEEP BAY AREA	Starling Inlet
Little Grebe	0	0	7					0		0	0	0	0	0	0	0	0	0	7	
Great Crested Grebe			63		141										0		141	141	204	
Great Cormorant	0	0	383					0		0	0	0	0	0	0	0	0	0	383	
Dalmatian Pelican															0			0	0	
Grey Heron	0	0	118	42				0		0	0	0	0	0	0	0	42	42	160	
Purple Heron															0			0	0	
Great Egret	0	0	50	52				0		0	0	0	0	0	0	0	52	52	102	
Intermediate Egret	0	0		3				0		0	0	0	0	0	0	0	3	3	3	
Little Egret	0	0	140	64				0		0	0	0	0	0	0	0	64	64	204	
Swinhoe's Egret															0			0	0	
Pacific Reef Egret															0			0	0	
Cattle Egret	0	0						0		0	0	0	0	0	0	0	0	0	0	
Chinese Pond Heron	0	0	12	2				0		0	0	0	0	0	0	0	2	2	14	
Striated Heron	0	0						0		0	0	0	0	0	0	0	0	0	0	
B-c Night Heron	0	0	1					0		0	0	0	0	0	0	0	0	0	1	
Yellow Bittern	0	0						0		0	0	0	0	0	0	0	0	0	0	
Cinnamon Bittern															0			0	0	
Great Bittern															0			0	0	
Black Stork															0			0	0	
Black-headed Ibis															0			0	0	
Eurasian Spoonbill															0			0	0	
Black-faced Spoonbill			43												0			0	43	
Common Shelduck					6										0		6	6	6	
Eurasian Wigeon	0	0	408	650	440			0		0	0	0	0	0	0	0	1090	1090	1498	
Falcated Duck															0			0	0	
Gadwall															0			0	0	
Baikal Teal															0			0	0	
Common Teal	0	0	181	56	270			0		0	0	0	0	0	0	0	326	326	507	
Mallard															0			0	0	
Spot-billed Duck															0			0	0	
Chinese Spotbill															0			0	0	
Burmese Spotbill															0			0	0	
Northern Pintail			80	5	1440										0		1445	1445	1525	
Garganey					20										0		2	2	20	
Northern Shoveler			4684	155	1850										0		2005	2005	6689	
Common Pochard					2										0		2	2	2	
Baer's Pochard															0			0	0	
Tufted Duck			319	10	2670										0		2680	2680	2999	
Greater Scaup															0			0	0	
Red-breasted Merganser															0			0	0	
Duck sp.			4110	1034											0		1034	1034	5144	
Slaty-breasted Rail															0			0	0	
Water Rail															0			0	0	
White-breasted Waterhen	0	0	4					0		0	0	0	0	0	0	0	0	0	4	
Watercock															0			0	0	
Common Moorhen	0	0	4					0		0	0	0	0	0	0	0	0	0	4	
Eurasian Coot			2												0			0	2	

Pheasant-tailed Jacana																	0			0	<b>0</b>
Greater Painted Snipe																	0			0	<b>0</b>
Black-winged Stilt			375														0			0	<b>375</b>
Pied Avocet			9627	1875													0	1875	1875		<b>11502</b>
Oriental Pratincole																	0			0	<b>0</b>
Northern Lapwing																	0			0	<b>0</b>
Grey-headed Lapwing																	0			0	<b>0</b>
Pacific Golden Plover																	0			0	<b>0</b>
Grey Plover			20														0			0	<b>20</b>
Common Ringed Plover																	0			0	<b>0</b>
Little Ringed Plover	0	0		8			0	0	0	0	0	0	0	0	0	0	0	8	8		<b>8</b>
Kentish Plover			45														0			0	<b>45</b>
Lesser Sand Plover																	0			0	<b>0</b>
Greater Sand Plover																	0			0	<b>0</b>
Black-tailed Godwit			396														0			0	<b>396</b>
Bar-tailed Godwit																	0			0	<b>0</b>
Whimbrel																	0			0	<b>0</b>
Eurasian Curlew			316	235													0	235	235		<b>551</b>
Far Eastern Curlew																	0			0	<b>0</b>
Spotted Redshank																	0			0	<b>0</b>
Common Redshank			225														0			0	<b>225</b>
Marsh Sandpiper																	0			0	<b>0</b>
Common Greenshank			269														0			0	<b>269</b>
Nordmann's Greenshank																	0			0	<b>0</b>
Green Sandpiper	0	0				0	0	0	0	0	0	0	0	0	0	0	0	0	0	0	<b>0</b>
Wood Sandpiper	0	0	30			0	0	0	0	0	0	0	0	0	0	0	0	0	0	0	<b>30</b>
Terek Sandpiper																	0			0	<b>0</b>
Common Sandpiper	0	0	1			0	0	0	0	0	0	0	0	0	0	0	0	0	0	0	<b>1</b>
Grey-tailed Tattler																	0			0	<b>0</b>
Ruddy Turnstone																	0			0	<b>0</b>
Red-necked Phalarope																	0			0	<b>0</b>
Pintail Snipe																	0			0	<b>0</b>
Swinhoe's Snipe																	0			0	<b>0</b>
Pintail/Swinhoe's Snipe																	0			0	<b>0</b>
Common Snipe																	0			0	<b>0</b>
Long-billed Dowitcher																	0			0	<b>0</b>
Asian Dowitcher																	0			0	<b>0</b>
Red Knot																	0			0	<b>0</b>
Great Knot																	0			0	<b>0</b>
Sanderling																	0			0	<b>0</b>
Red-necked Stint																	0			0	<b>0</b>
Little Stint																	0			0	<b>0</b>
Temminck's Stint			1	30													0	30	30		<b>31</b>
Long-toed Stint																	0			0	<b>0</b>
Pectoral Sandpiper																	0			0	<b>0</b>
Sharp-tailed Sandpiper																	0			0	<b>0</b>
Dunlin																	0			0	<b>0</b>
Curlew Sandpiper																	0			0	<b>0</b>
Spoon-billed Sandpiper																	0			0	<b>0</b>
Broad-billed Sandpiper																	0			0	<b>0</b>
Ruff																	0			0	<b>0</b>
Small wader spp.																	0			0	<b>0</b>
Wader sp.			2385	736													0	736	736		<b>3121</b>

Black-tailed Gull																			0		0	0	
Heuglin's Gull																			0		0	0	
Yellow-legged Gull																			0		0	0	
Slaty-backed Gull																			0		0	0	
Pallas's Gull																			0		0	0	
Large Gull spp.																			0		0	0	
Brown-headed Gull																			0		0	0	
Black-headed Gull	0	0	6595	500	410			0		0	0	0	0	0	0	0	0	910	910	910	910	7505	
Saunders's Gull				36														36	36	36	36	36	
Whiskered Tern																			0		0	0	
White-winged Tern																			0		0	0	
Gull-billed Tern																			0		0	0	
Caspian Tern																			0		0	0	
<b>Total</b>	<b>0</b>	<b>0</b>	<b>30894</b>	<b>5493</b>	<b>7249</b>	<b>0</b>	<b>0</b>	<b>0</b>	<b>0</b>	<b>0</b>	<b>0</b>	<b>0</b>	<b>0</b>	<b>0</b>	<b>0</b>	<b>0</b>	<b>0</b>	<b>12724</b>	<b>12724</b>	<b>12724</b>	<b>43636</b>	<b>0</b>	
	<b>Deep Bay Area</b>	<b>%</b>	<b>Ramsar Site</b>	<b>%</b>	<b>SI</b>																		
<b>Cormorants</b>	<b>383</b>	<b>0.9</b>	<b>0</b>	<b>0.0</b>	<b>0</b>	<b>0</b>																	
<b>Ardeids etc</b>	<b>527</b>	<b>1.2</b>	<b>163</b>	<b>1.3</b>	<b>0</b>	<b>0</b>																	
<b>Ducks, grebes, pelicans</b>	<b>18601</b>	<b>42.6</b>	<b>8731</b>	<b>68.6</b>	<b>0</b>	<b>0</b>																	
<b>Rails, Coot etc</b>	<b>10</b>	<b>0.0</b>	<b>0</b>	<b>0.0</b>	<b>0</b>	<b>0</b>																	
<b>Waders</b>	<b>16574</b>	<b>38.0</b>	<b>2884</b>	<b>22.7</b>	<b>0</b>	<b>0</b>																	
<b>Gulls and terns</b>	<b>7541</b>	<b>17.3</b>	<b>946</b>	<b>7.4</b>	<b>0</b>	<b>0</b>																	
<b>TOTAL</b>	<b>43636</b>		<b>12724</b>		<b>0</b>	<b>0</b>																	
Date of count: 21 Feb 2010 (low tide)																							
n/c = site not counted											High tide measured at TBT:												
# indicates count consists of or includes a count made up to one week either side of the count date																							
% = count made at evening roost																							
<b>Wetland-dependant species</b>																							
<b>Species</b>	<b>SRA</b>	<b>SRB</b>	<b>DBA</b>	<b>DBB</b>	<b>DBC</b>	<b>DBD</b>	<b>DBE</b>	<b>DBF (TBT)</b>	<b>NW/LFS</b>	<b>TKC</b>	<b>LC</b>	<b>TSW</b>	<b>MPST</b>	<b>ST</b>	<b>MPNR</b>	<b>Ramsar ponds</b>	<b>Ramsar intertidal areas</b>	<b>Ramsar Site</b>	<b>DEEP BAY AREA</b>	<b>Starling Inlet</b>			
Osprey			4												0			0	4				
Black Kite	0	0	2					0		0	0	0	0	0	0	0	0	0	2				
White-bellied Sea Eag															0			0	0				
Eastern Marsh Harrier			1												0			0	1				
Common Buzzard			1												0			0	1				
Greater Spotted Eagle	0	0						0		0	0	0	0	0	0	0	0	0	0				
Imperial Eagle	0	0						0		0	0	0	0	0	0	0	0	0	0				
Peregrine Falcon															0			0	0				
Pied Kingfisher	0	0						0		0	0	0	0	0	0	0	0	0	0				
Common Kingfisher	0	0	1					0		0	0	0	0	0	0	0	0	0	1				
White-throated Kingfisher	0	0	2					0		0	0	0	0	0	0	0	0	0	2				
Black-capped Kingfisher	0	0	1					0		0	0	0	0	0	0	0	0	0	1				
Red-billed Starling	0	0						0		0	0	0	0	0	0	0	0	0	0				
Collared Crow	0	0						0		0	0	0	0	0	0	0	0	0	0				